

RIDERS STAR GROUP LTD.

COMPANY PROFILE

We help businesses find and set up the best machines for their work. We have a lot of experience in this area and we only sell high-quality equipment. We also offer training to help your team use the machines properly.

Our goal is to make your business more efficient and successful.

MORE INFO

www.ridersgroupbd.com

CONTACT US

+880 1989 699 314

info@ridersgroupbd.com



Riders Star Group Ltd.

ABOUT US

Riders Star Group Ltd. is your premier destination for sourcing, importing, and installing top-quality business machinery. With over **9 years** of experience in the industry, we've established ourselves as a trusted partner for businesses seeking reliable and efficient equipment.

Our commitment to excellence is reflected in every aspect of our services. From the moment you choose a machine to its installation and ongoing support, we're dedicated to ensuring your complete satisfaction. We offer a wide range of products, each backed by a **guarantee** of quality and performance.

Our team of experts is always available to provide **comprehensive training** on your new equipment, empowering your staff to maximize its potential.

Led by **Md. Towhidur Rahman**, CEO, Riders Star Group Ltd. is committed to delivering exceptional value and service to our customers.

Contents 目录



One Stop Solution for drilling tapping machine 一站式钻孔攻牙解决方案

CNC drilling machine 数控钻孔机	P08-09
Hydraulic drilling machine 精密油压自动钻孔机	P10-11
Multi-axis automatic drilling machine 多轴自动钻孔机组合应用	P12
Bench auto feed drilling machine 自动进刀钻床	P13
Heavy duty multi spindle drilling machine 强力多轴液压数控钻床	P14-15
CNC tapping machine 数控攻丝机	P16-17
CNC drilling tapping machine 数控钻孔攻丝机	P18-19
Double-spindle compound machine 双头多用机床	P20
Gear type tapping machine 齿轮式自动攻丝机	P21-23
Electric tapping machine 伺服电动攻丝机	P24-25
Multi-spindle head 精密多轴器	P26-29
CNC machine center 数控加工中心	P30-33
CNC milling drilling machine 数控钻铣床	P34-35



RIDERS Star Group Ltd.
SOURCING, IMPORT, INSTALLATION.

Fully automatic drilling machine 全自动钻孔机	P36
Fully automatic tapping machine 全自动攻丝机	P37
Nut tapping machine 螺母攻牙机	P38-39
Multistation rotary drilling tapping machine 多工位转盘机	P40-41
Servo slide drilling tapping machine 滑台式钻攻专机	P42-43
Drilling & tapping connecting machine 钻攻联体机	P44-45
CNC lathe machine 数控/自动车床	P46-47
Drilling head units (伺服)钻孔动力头	P48-49
Tapping head units (伺服)攻牙动力头	P50-51
Vibrating plate 振动盘	P52-53
Machinery fitting 机械配件系列	P54-56
Product application 产品应用	P57

精密夹头配件
Precision Chuck Fittings

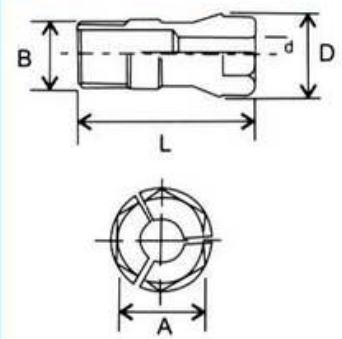


CT 夹头

C 夹头

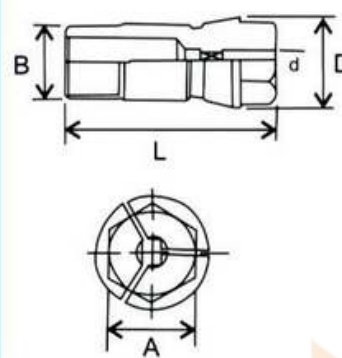
ER 夹头

C型钻孔夹头参数 C-type Drilling Chuck Parameters:



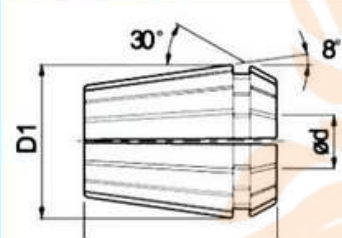
Model 型号	Ød柄径 (mm) Handle diameter	ØD (mm)	L (mm)	B	A (mm)	最大夹持能力 Max. clamping capacity
C-4	Ø1-Ø4	Ø8.2	24	1/4-28UNF	6	Ø4
C-5	Ø1-Ø5	Ø10.8	31.5	5/6-24UNF	8	Ø5
C-6	Ø1-Ø6	Ø13.1	36	3/8-24UNF	10	Ø6
C-9	Ø1-Ø9	Ø17	46	1/2-20UNF	14	Ø9
C-12	Ø2-Ø12	Ø21	50	5/8-18UNF	17	Ø12
C-14	Ø5-Ø14	Ø24.5	54	3/4-16UNF	21	Ø14
C-16	Ø5-Ø16	Ø31	70	M24-2.0	26	Ø16

CT型攻牙夹头参数 CT-type Tapping Chuck Parameters:

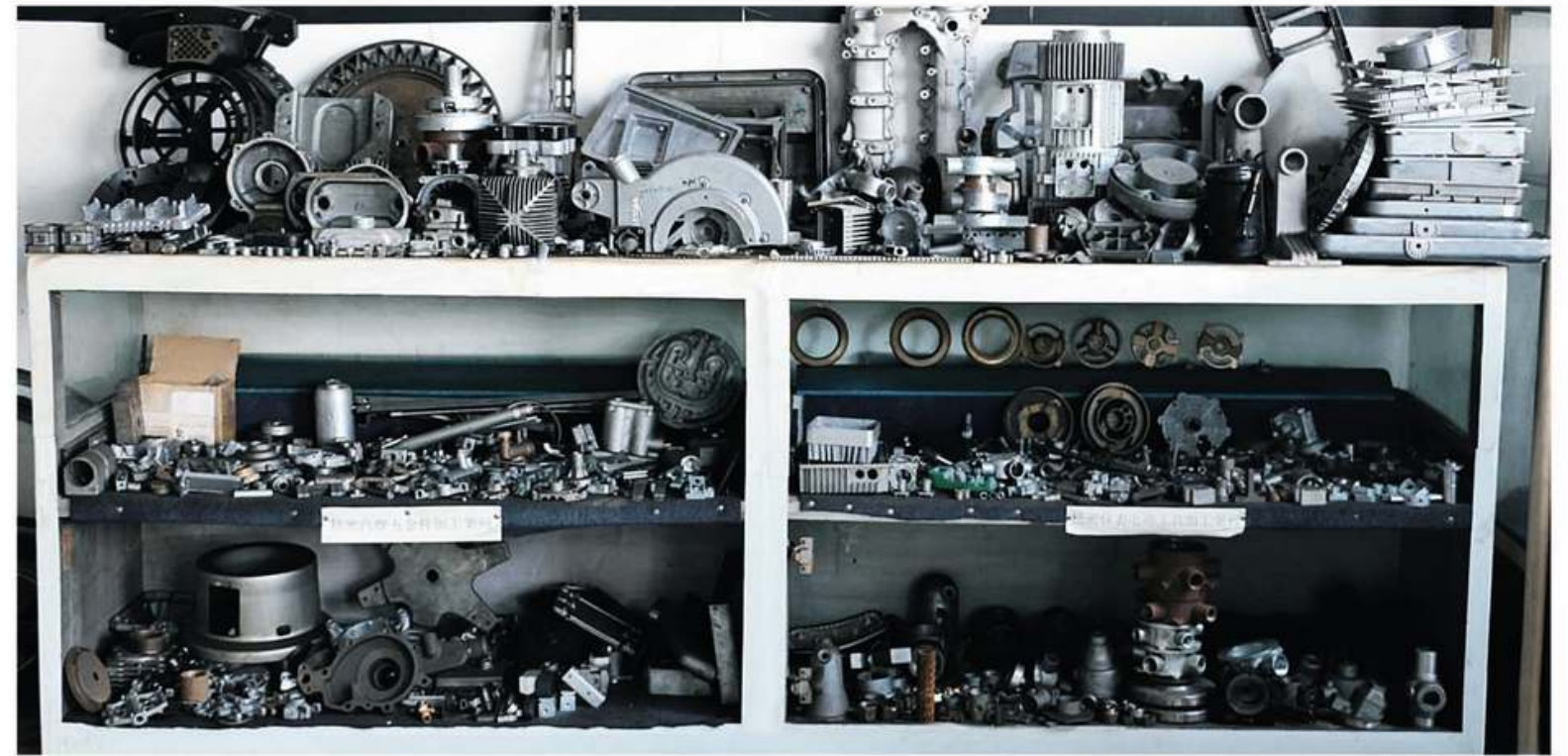


Model 型号	Ød柄径 (mm) Handle diameter	ØD (mm)	L (mm)	B	A (mm)	最大夹持能力 Max. clamping capacity
CT-4	Ø3-Ø4	Ø8.2	24	1/4-28UNF	6	M3.5×0.6
CT-5	Ø3-Ø5	Ø10.8	31.5	5/6-24UNF	8	M4×0.7
CT-6	Ø3-Ø6	Ø13.1	36	3/8-24UNF	10	M6×1.0
CT-9	Ø3-Ø7	Ø17	46	1/2-20UNF	14	M8×1.25
CT-12	Ø3-Ø9	Ø21	50	5/8-18UNF	17	M12×1.75
CT-14	Ø5-Ø12	Ø24.5	54	3/4-16UNF	21	M14×2.0
CT-16	Ø5-Ø14	Ø31	70	M24-2.0	26	M18×2.5

ER夹头参数 ER Chuck Parameters:



Model 型号	Clamping Range 型夹持范围														
ER8	1.0-1.5	1.5-2.0	2.0-2.5	2.5-3.0	3.0-3.5	3.5-4.0	4.0-4.5	4.5-5.0							
ER11	1.0-1.5	1.5-2.0	2.0-2.5	2.5-3.0	3.0-3.5	3.5-4.0	4.0-4.5	4.5-5.0	5.0-5.5	5.5-6.0	6.0-6.5	6.5-7.0			
ER16	2-3	3-4	4-5	5-6	6-7	7-8	8-9	9-10							
ER20	2-3	3-4	4-5	5-6	6-7	7-8	8-9	9-10	10-11	11-12	12-13				
ER25	2-3	3-4	4-5	5-6	6-7	7-8	8-9	9-10	10-11	11-12	12-13	13-14	14-15	15-16	



丝攻夹头A

铣床BT夹头

手动夹头座

气动夹头座

钻孔夹头

丝攻夹头B

数控钻孔机

DSZ-12(T) / DSZ-20(T) / DSZ-30(T)



DSZ-12



DSZ-20



DSZ-30



DSZ-20T

主要特点:

1. 按加工中心原理设计，高效、高速。
2. 工件加工时间减少60%，加工效率提高2-3倍。
3. 单次及连续动作、时间等待设置、分段进给等模式。
4. 高精度滚珠丝杠。
5. 智能控制、操作简单、重复精度达到0.02mm。

Main Characteristics:

1. Designed according to CNC machining center, high efficiency and high speed.
2. The workpiece processing time is reduced by 60%, and the processing efficiency is increased by 2-3 times.
3. Single and continuous action, time waiting setting, segment feeding, etc.
4. High precision ball screw.
5. Intelligent control, simple operation, repeatability up to 0.02mm.

标准附件

Standard Accessories

- | | |
|-----------|------------------------|
| 1. 国产数控系统 | 1. Domestic CNC system |
| 2. 夹头一套 | 2. A set of collet |
| 3. 工具箱 | 3. Tool box |
| 4. 操作说明书 | 4. Manual |
| 5. 装箱清单 | 5. Packing List |

特殊附件

Special Accessories

- | | |
|----------|------------------------|
| 1. 机箱柜子 | 1. Cabinet |
| 2. 冷却系统 | 2. Coolant system |
| 3. 多轴器 | 3. Multi spindles head |
| 4. 伺服分度盘 | 4. Servo index plate |
| 5. 卡盘 | 5. Chuck |
| 6. 分割器 | 6. Divider |
| 7. 工装夹具 | 7. Fixture |

PRODUCT PARAMETERS 产品参数

Model 型号	DSZ-12(T)	DSZ-20(T)	DSZ-30(T)
Drilling capacity(Steel,Iron) 钻孔能力(不锈钢,铁)	10mm/12mm	16mm/22mm	26mm/30mm
Spindle travel 主轴行程	100mm	100mm	160mm
Taper 锥度	B16	MT.2	MT.3
Spindle speed 主轴转速	480-3030r/min	450-2050r/min	480-1920r/min
Main spindle to working table 主轴到工作台距离	140-450mm	120-510mm	115-645mm
Column diameter 立柱直径	85mm	95mm	120mm
Working table 工作台尺寸	250*300mm	315*350mm	310*400mm
Motor 电机	0.75kw 4P/ 0.75kw 6P	1.5kw 4P/ 1.5kw 6P	2.2kw 4P/ 1.5kw 6P
Weight 重量	120kg/180kg	175kg/250kg	300kg/400kg
Volume 体积	770*620*950mm 770*620*1800mm	880*610*1060mm 880*610*1880mm	1000*700*1370mm 1000*700*1970mm

详细信息 / Product detail



DYZ-12 (T) / DYZ-20 (T) / DYZ-30 (T)



DYZ-12



DYZ-20



DYZ-30T

1. “自动退屑”装置--特殊功能选购。
2. 采用油压分段进刀钻孔，特别适合深孔，不锈钢等加工的条件下使用。
3. 机台进退刀搭配油压动力，加工稳定性更佳，更完美。
4. 配合中、大型多轴器更符合多轴器各项条件进行加工。避免气压不稳定的缺点，使产品质量更稳定。

1. Automatic remove chip special function purchase
2. It adopts oil pressure section feeding and drilling, especially suitable for deep hole, stainless steel and other processing conditions.
3. Machine feed and retreat with hydraulic power, perfect processing stability
4. Cooperate with medium and large multi-spindle head to process according to various conditions to avoid the disadvantage of unstable air pressure and make the product quality more stable.

主要特点:

主轴系统: 主轴采用油压动力头，进刀平稳，并可通过调整流量控制阀来调节进刀速度，调速容易，可根据要求配不同钻孔动力头。

油压系统: 一般采用可变容量叶片泵，噪声小，温升低，运转顺滑，并采用超大流量电磁阀可保证动作平稳顺畅。

电气系统: 多头系统可用PLC控制，故障率低，维修简易，动作修改容易，主轴变速可选用变频器进行调速，调速容易，操作方便。

配制系统: 可选各型钻孔，攻牙动力头，可选夹具、油缸、气，可特殊订制专机。

Main Characteristics:

Spindle system: The main shaft adopts hydraulic head, the feed is stable, and the feed rate can be adjusted by adjusting the flow control valve. The speed adjustment is easy, and the power head with different drilling ability can be equipped according to requirements.

Oil pressure system: The variable capacity vane pump is generally used, which has low noise, low temperature rise, smooth running, and the use of a large flow solenoid valve to ensure smooth and smooth movement.

Electrical system: The multi-head system can be controlled by PLC, the failure rate is low, the maintenance is simple, the action is easy to modify, the spindle variable speed can be adjusted by the frequency converter, the speed regulation is easy, and the operation is convenient.

Preparation system: Optional drilling, tapping power head, optional fixture, cylinder, gas, special custom machine.

PRODUCT PARAMETERS

产品参数

Model 型号	DYZ-12 (T)	DYZ-20 (T)	DYZ-30 (T)
Drilling capacity 钻孔能力	20mm	30mm	35mm
Spindle travel 主轴行程	135mm	140mm	140mm
Spindle taper 主轴锥度	MT2	MT3	MT4
Spindle speed 主轴转速	500-1800r/min	400-1200r/min	480-720r/min
Main spindle to working table 主轴到工作台距离	600mm	450mm	700mm
Column diameter 立柱直径	65mm	75mm	115mm
Working table 工作台尺寸	370*400mm	370*400mm	370*400mm
Motor 电机	0.75kw/4p	1.5kw/4p	2.2kw/6p
Weight 重量	320kg	400kg	550kg
Volume 体积	650*300*820mm	700*350*820mm	1000*800*1700mm

详细信息 / Product detail



DAZ-12/ DAZ-20/ DAZ-25/ DAZ4032/ DAZ5032



Ø19 空油压多轴钻孔机



Ø20 油压多轴钻孔机



Ø13 油压多轴钻孔机



DAZ-12



DAZ-20



DAZ-25



DAZ4032



DAZ5032

主要特点:

1. 外观美观,大方,新颖,结构合理,刚性好,强度高。
2. 工作台可升降,可360度回转,操作省力。
3. 主轴箱,工作台,立柱,底座采用优质铸铁,并经过特殊处理,稳重结实,经久耐用。
4. 主轴,花键套,齿轮轴经过热处理工艺,强度高。
5. 机床转速有广泛的变速范围,可进行手动操作,可随时轻便地接通或者切断进给。

Main Characteristics:

1. Beautiful appearance, generous, novel, reasonable structure, good rigidity and high strength.
2. The worktable can be lifted and lowered, can be rotated 360 degrees, and the operation is labor-saving.
3. Spindle box, work table, column, base are made of high quality cast iron, and specially treated, stable and durable.
4. Spindle, spline sleeve, gear shaft through heat treatment process, high strength.
5. The machine speed has a wide range of shifting speeds, which can be manually operated, and can be turned on or off at any time.

PRODUCT PARAMETERS

产品参数

Model 型号	DAZ-12	DAZ-20	DAZ-25	DAZ4032	DAZ5032
Drilling capacity 钻孔能力	12mm	20mm	25mm	31.5mm	31.5mm
Spindle travel 主轴行程	95mm	110mm	130mm	130mm	130mm
Taper 锥度	B16	MT-2	MT-3	MT-3	MT-3
Spindle speed 主轴转速	480-2440r/min	295-1380r/min	230-2160r/min	50-1260r/min	50-1260r/min
Main spindle to working table 主轴到工作台距离	318mm	368mm	630mm	—	787mm
Column diameter 立柱直径	70mm	85mm	102mm	115mm	115mm
Working table 工作台尺寸	265*265mm	290*320mm	330*380mm	—	540*470mm
Motor 电机	0.55kw	1.1kw	1.5kw	1.1kw	1.1kw
Weight 重量	115kg	155kg	270kg	274kg	355kg
Volume 体积	780*450*1000mm	840*500*1100mm	1000*660*2000mm	850*590*1280mm	840*770*1930mm

油压自动钻孔机加多轴器及模具配套组合范例

1. 加装多轴器,同时钻孔加工多个工件,提高生产效率。
2. 多轴器,导孔板及模具配套设计,以达到品质精度要求。
3. 适用于铰孔,钻孔及倒锥坑等加工。

Hydraulic drilling machine with multi spindle head

1. Add multi-axis device and drill multiple workpieces at the same time to improve efficiency
2. Multi-axis, guide plate and mold design to achieve quality accuracy requirements
3. Suitable for reaming, drilling and chamfering



Ø30 油压多轴钻孔机

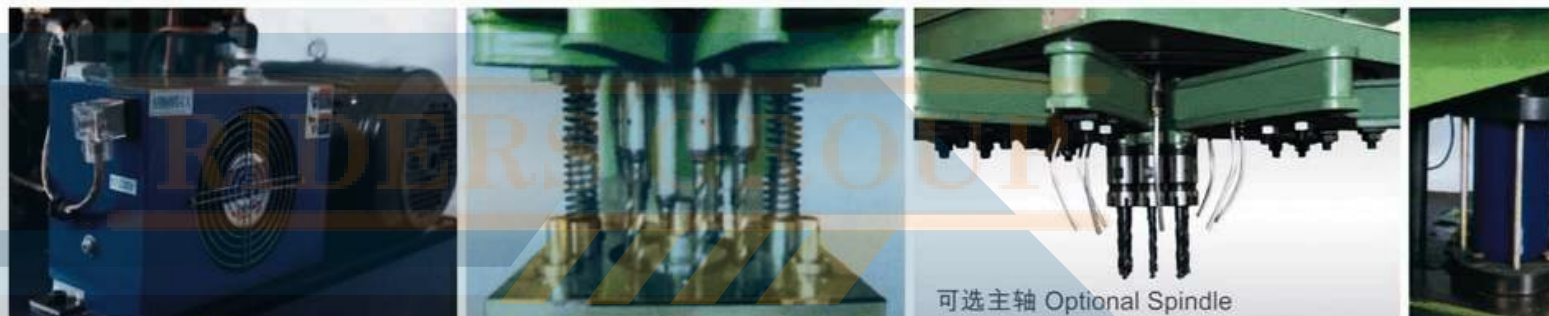
DHZ5213*12/DHZ5223*6/DHZ5223*8



PRODUCT PARAMETERS 产品参数

Model 型号	DHZ5213*12	DHZ5223*6	DHZ5223*8
Max No.of spindle 最大轴数量	6/12	6	6/8
Max drilling capacity 最大钻孔能力	13mm/10mm	14-23mm	16mm/23mm
Working area 工件范围	300*180/300*300mm	290*170/290*290mm	290*170/ 290*290mm
Min center distance 最小间距	30/25mm	45mm	45mm
Worktable size 工作台尺寸	500*350mm	500*350mm	500*350mm
From spindle to worktable 主轴到工作台距离	250mm	210mm	210mm
Max spindle travel 主轴最大行程	240mm	240mm	240mm
Speed 转速	557/842/1367r/min	224/338/549r/min	320/480/780r/min
Motor 电机	3kw/4kw	4kw	4kw
Size 尺寸	907*684*1780mm	907*684*1780mm	907*684*1780mm
Weight 重量	980kg	980kg	980kg

详细信息 / Product detail



可选主轴 Optional Spindle



数控攻丝机

DSG-100(T) / DSG-200(T) / DSG-300(T)



DSG-100



DSG-200



DSG-300



DSG-200T

主要特点:

1. 按加工中心原理设计, 达到工作过程高速、高效。
2. 高精度滚珠丝杠、无间隙、运动精度高。
3. 智能控制、操作简单、重复精度达到0.02mm。
4. 维护方便、降低使用成本。

Main Characteristics:

1. Designed according to CNC machining center, high speed and high efficiency in the working process.
2. High-precision ball screw, no gap, high motion accuracy.
3. Intelligent control, simple operation, repeatability up to 0.02mm.
4. Easy maintenance and save cost.

标准附件

Standard Accessories

- | | |
|-----------|------------------------|
| 1. 国产数控系统 | 1. Domestic CNC system |
| 2. 夹头一套 | 2. A set of collet |
| 3. 工具箱 | 3. Tool box |
| 4. 操作说明书 | 4. Manual |
| 5. 装箱清单 | 5. Packing List |

特殊附件

Special Accessories

- | | |
|----------|------------------------|
| 1. 机箱柜子 | 1. Cabinet |
| 2. 冷却系统 | 2. Coolant system |
| 3. 多轴器 | 3. Multi spindles head |
| 4. 伺服分度盘 | 4. Servo index plate |
| 5. 卡盘 | 5. Chuck |
| 6. 分割器 | 6. Divider |
| 7. 工装夹具 | 7. Fixture |

PRODUCT PARAMETERS

产品参数

Model 型号	DSG-100(T)	DSG-200(T)	DSG-300(T)
Tapping capacity 攻丝能力	M10	M18	M30
Spindle travel 主轴行程	100mm	120mm	170mm
Taper 锥度	MT.2	MT.2	MT.3
Spindle speed 主轴转速	0-1250r/min	0-1500r/min	0-2000r/min
Main spindle to working table 主轴到工作台距离	510mm	510mm	645mm
Column diameter 立柱直径	85mm	85mm	120mm
Working table 工作台尺寸	250*300mm	315*350mm	310*400mm
Motor 电机	1.1kw 4N.m	1.8kw 6N.m	4.8kw 18N.m
Weight 重量	125kg/185kg	175kg/235kg	320kg/400kg
Volume 体积	860*610*1060mm 860*610*1880mm	880*700*1060mm 880*700*1880mm	1000*700*1370mm 1000*700*1970mm



智能化

效率高

DSZG-12(T) / DSZG-20(T) / DSZG-30(T)



DSZG-12

DSZG-20

DSZG-30

DSZG-30T

本机床采用伺服控制系统，噪音低，适用于在各种常用材料上的钻、扩、铰孔及攻丝。
This machine adopts servo control system with low noise, suitable for drilling, enlarge, reaming and tapping on various common materials.

主要特点:

1. 按加工中心原理设计。
2. 本机床采用双伺服电机进给，分别作为主轴旋转，主轴进给的动力，同步性强。
3. 使用钻攻一体复合钻，则可一次完成螺纹通孔的加工。
4. 操作简单，重复精度可达0.02mm。

Main Characteristics:

1. Designed according to CNC machining center.
2. This machine adopts double servo motor feed, one used to spindle rotation, the other to spindle feed power, and the synchronization is strong.
3. Using the drilling and tapping combination drill, the threaded through hole can be processed at one time.
4. Simple operation, repeatability up to 0.02mm.

标准附件

Standard Accessories

- | | |
|-----------|------------------------|
| 1. 国产数控系统 | 1. Domestic CNC system |
| 2. 夹头一套 | 2. A set of collet |
| 3. 工具箱 | 3. Tool box |
| 4. 操作说明书 | 4. Manual |
| 5. 装箱清单 | 5. Packing List |

特殊附件

Special Accessories

- | | |
|----------|------------------------|
| 1. 机箱柜子 | 1. Cabinet |
| 2. 冷却系统 | 2. Coolant system |
| 3. 多轴器 | 3. Multi spindles head |
| 4. 伺服分度盘 | 4. Servo index plate |
| 5. 卡盘 | 5. Chuck |
| 6. 分割器 | 6. Divider |
| 7. 工装夹具 | 7. Fixture |

PRODUCT PARAMETERS

产品参数

Model 型号	DSZG-12(T)	DSZG-20(T)	DSZG-30(T)
Drilling tapping capacity 钻孔/攻丝能力	10mm/M10	20mm/M16	30mm/M33
Spindle travel 主轴行程	100mm	120mm	160mm
Taper 锥度	MT.2	MT.2	MT.3
Spindle speed 主轴转速	0-2800r/min	0-2500r/min	0-2500r/min
Main spindle to working table 主轴到工作台距离	480mm	510mm	645mm
Column diameter 立柱直径	85mm	95mm	120mm
Motor 电机	1.1kw/4N.m	1.8kw/4N.m	4.8kw/6N.m
Weight 重量 (T)	125kg/185kg	175kg/250kg	320kg/400kg
Volume 体积 (T)	630*770*950mm	880*610*1060mm	1000*700*1370mm
	630*770*1880mm	880*610*1880mm	1000*700*1970mm



DK-I 立(卧)式等牙距自动攻丝机



详细信息 / Product detail

Save time and effort
省时省力

标准附件 Standard Accessories

- | | |
|---------|-----------------|
| 1: 钻夹头 | 1: Drill chuck |
| 2: 锥柄接杆 | 2: Arbor |
| 3: 锥柄接套 | 3: Taper sleeve |
| 4: 下刀铁 | 4: Drift |
| 5: 拉杆 | 5: Drawbar |
| 6: 扳手 | 6: Wrench |

产品参数 PRODUCT PARAMETERS

Model 型号	ZXSM-45	ZXSM-45A
最大钻孔直径 Max. Drilling capacity	31.5mm	45mm
最大攻丝直径 Max. Tapping capacity	M33	M36
主轴最大行程 Spindle travel	100mm	120mm
主轴中心至立柱表面距离 Distance spindle axis to column surface	275mm	275mm
主轴端至底座工作台面最大距离 Distance spindle nose to working surface of base	515mm	665mm
主轴锥度 Spindle taper	MT3	MT4
主轴转速 Spindle speeds	钻(Drill): 75,130,240,390,670,1200 攻、铰(Tap,Ream): 35,65,120,190,330,600	
工作台面尺寸 Dimension of worktable surface	800×240mm	1000×240mm
工作台行程 Table travel	200×200mm	400×200mm
电动机 Motor	2.2kw	2.2kw
毛重净重 G.W./N.W.	550kg/500kg	650kg/600kg
包装尺寸 Packing dimension	1090×890×1900mm	1090×1090×2050mm

标准附件

- 工具箱1只
牙距齿轮1组 (规格由客户指定)
可选配件: 工作台

Standard Accessories

- Toolbox 1
Spacing gear set 1
(specifications specified by customers)
Optional Accessories: Workbench



卧式 Horizontal



立式 Vertical

主要特点:

1. 正反转马达特殊设计, 低惯性防止丝攻折损。
2. 可针对细孔牙、盲孔牙、穿孔牙做功能动作选择。
3. 攻牙正反转时主轴转速高、低速自动转换, 攻牙深度精度达±0.1mm。
4. 特别适合手表、眼镜、手机、相机等精密小五金件的细孔牙、盲孔牙加工。
5. 可配多轴攻牙器, 完成多孔一次性同时自动攻牙, 提高了生产效率。且等牙距进刀, 可创造完美牙纹及延长牙攻寿命。
6. 采用实心立柱, 经回火处理消除应力, 外表镀硬铬, 耐摩擦, 不生锈。

Main Characteristics:

1. Special design of positive and reverse motor, low inertia to prevent breakage of tapping.
2. Functional action can be selected for perforated teeth, blind teeth and perforated teeth.
3. The spindle rotation speed is high and the spindle speed is low when the tapping is reversed, and the accuracy of tapping depth is (±0.1mm).
4. It is especially suitable for the processing of fine and blind holes in precise hardware such as watches, glasses, mobile phones and cameras.
5. It can be equipped with multi-axis tapping device to complete one-off multi-hole tapping and automatic tapping at the same time, which improves the production efficiency.
6. Solid column, tempered to eliminate stress, hard chromium plating, friction resistance, no rust.

产品参数 PRODUCT PARAMETERS

Model 型号	立式 Vertical / 卧式 Horizontal DK-I
主轴冲程最大 Max.spindle travel(mm)	45
旋径 Swing(mm)	330
螺牙直径Screw diameter(mm)	铜铁M2~M8 铜锌M10以下
头部上下距(mm) The head and upper and lower distance	260
主轴端和台面距离(mm) Main spindle to working table	350
工作台尺寸 Bed dimension(m)	225×230
基础面积 Base area(mm)	415×300
马达 Motor(mm)	3H 4P 0.75kw(1HP)
主轴回旋数 The number of spindle swing	50Hz 1340 760 420 60Hz 1600 900 500
自动送机螺距 Automatic feeder pitch	每英寸牙数 64, 56, 48, 44, 40, 32, 28, 24, 20, 18, 16 mm 0.2, 0.25, 0.3, 0.35, 0.4, 0.45, 0.5, 0.6, 0.7, 0.75, 0.8, 0.9, 1.0, 1.25, (11.5)
多轴最大能力 Multiaxial Max.	M3×10轴 M4×5轴

DK-II 立(卧)式等牙距自动攻丝机

DK-III 立(卧)式等牙距自动攻丝机

标准附件

工具箱1只
牙距齿轮1组(规格由客户指定)
可选配件:工作台

Standard Accessories

Toolbox 1
Spacing gear set 1
(specifications specified by customers)
Optional Accessories: Workbench



卧式 Horizontal



立式 Vertical

主要特点:

1. 正逆转马达特殊设计, 低惯性防止丝攻折损。
2. 马达内装独立降温风扇强制散热, 可连续操作, 坚固耐用。
3. 主轴可高速连续循环运转, 员工只需放加工的产品, 轻松方便, 安全高效。
4. 特别适合手表、眼镜、手机、相机等精密小五金件的细孔牙、盲孔牙加工。
5. 可配多轴攻牙器, 完成多孔一次性同时自动攻牙, 提高了生产效率。且等牙距进刀, 可创造完美牙纹及延长牙攻寿命。
6. 采用实心立柱, 经回火处理消除应力, 外表镀硬铬, 耐摩擦, 不生锈。

Main Characteristics:

1. Special design of positive and reverse motor, low inertia to prevent breakage of tapping.
2. The motor is equipped with an independent cooling fan to compel heat dissipation, which can be operated continuously and is durable.
3. The spindle can be operated in high speed and continuous cycle. Employees only need to put the processed products, which is easy, convenient, safe and efficient.
4. It is especially suitable for the processing of fine and blind holes in precise hardware such as watches, glasses, mobile phones and cameras.
5. It can be equipped with multi-axis tapping device to complete one-off multi-hole tapping and automatic tapping at the same time, which improves the production efficiency.
6. Solid column, tempered to eliminate stress, hard chromium plating, friction resistance, no rust.

产品参数 PRODUCT PARAMETERS

Model 型号	立式 Vertical / 卧式 Horizontal DK-II					
主轴冲程最大 Max.spindle travel(mm)	65					
旋径 Swing(mm)	430					
螺牙直径Screw diameter(mm)	M5 ~ M16					
头部上下距(mm) The head and upper and lower distance	300					
主轴端和台面距离(mm) Main spindle to working table	470					
工作台尺寸 Bed dimension(m)	340×340					
基础面积 Base area(mm)	580×425					
马达 Motor(mm)	3H 6P 1.5kw(2HP)					
主轴回旋数 The number of spindle swing	50Hz	505	285	155	60Hz	620 340 190
自动送机螺距 Automatic feeder pitch mm	每英寸牙数	28, 24, 20, 19, 18, 16, 14, 12, 11, 10				
		0.7, 0.8, 0.9, 1.0, 1.25, 1.5, 1.75, 1.8, 2.0, 2.5				
多轴最大能力 Multiaxial Max.	M6×8轴	M8×4轴	M12×2轴			

标准附件

工具箱1只
牙距齿轮1组(规格由客户指定)
可选配件:工作台

Standard Accessories

Toolbox 1
Spacing gear set 1
(specifications specified by customers)
Optional Accessories: Workbench



卧式 Horizontal



立式 Vertical

主要特点:

1. 正逆转马达特殊设计, 低惯性防止丝攻折损。
2. 马达内装独立降温风扇强制散热, 可连续操作, 坚固耐用。
3. 主轴可高速连续循环运转, 员工只需放加工的产品, 轻松方便, 安全高效。
4. 特别适合手表、眼镜、手机、相机等精密小五金件的细孔牙、盲孔牙加工。
5. 可配多轴攻牙器, 完成多孔一次性同时自动攻牙, 提高了生产效率。且等牙距进刀, 可创造完美牙纹及延长牙攻寿命。
6. 采用实心立柱, 经回火处理消除应力, 外表镀硬铬, 耐摩擦, 不生锈。

Main Characteristics:

1. Special design of positive and reverse motor, low inertia to prevent breakage of tapping.
2. The motor is equipped with an independent cooling fan to compel heat dissipation, which can be operated continuously and is durable.
3. The spindle can be operated in high speed and continuous cycle. Employees only need to put the processed products, which is easy, convenient, safe and efficient.
4. It is especially suitable for the processing of fine and blind holes in precise hardware such as watches, glasses, mobile phones and cameras.
5. It can be equipped with multi-axis tapping device to complete one-off multi-hole tapping and automatic tapping at the same time, which improves the production efficiency.
6. Solid column, tempered to eliminate stress, hard chromium plating, friction resistance, no rust.

产品参数 PRODUCT PARAMETERS

Model 型号	立式 Vertical / 卧式 Horizontal DK-III					
主轴冲程最大 Max.spindle travel(mm)	65					
旋径 Swing(mm)	460					
螺牙直径Screw diameter(mm)	M10 ~ M32					
头部上下距(mm) The head and upper and lower distance	450					
主轴端和台面距离(mm) Main spindle to working table	600					
工作台尺寸 Bed dimension(m)	340×380					
基础面积 Base area(mm)	600×480					
马达 Motor(mm)	3H 6P 2.2kw(3HP)					
主轴回旋数 The number of spindle swing	50Hz	200	100	50	60Hz	240 120 60
自动送机螺距 Automatic feeder pitch mm	每英寸牙数	19, 16, 14, 12, 11, 10, 9, 8				
		1.5, 1.75, 2.0, 2.5, 3.0, 3.5				
多轴最大能力 Multiaxial Max.	M10×10轴	M16×4轴	M20×2轴			

M3-M16 M6-M30

M6-M36 M12-M48



产品参数 PRODUCT PARAMETERS

Model 型号	M3-M16	M6-M30
Tapping capacity 攻丝能力	M3-M16	M6-M30
Power 电机	600W/800W	1200W
Drilling speed 转速	0-312r/min	0-200r/min
Spindle travel 工作半径	380-1200mm	580-1200mm
Volume 体积	650*670*190mm	820*740*190mm
Weight 重量	28kg	48kg

产品参数 PRODUCT PARAMETERS

Model 型号	M6-M36	M12-M48
Tapping capacity 攻丝能力	M6-M36	M12-M48
Power 电机	1200W	1200W
Drilling speed 转速	0-140r/min	0-200r/min
Spindle travel 工作半径	580-1200mm	580-1200mm
Volume 体积	820*740*190mm	1100*1000*200mm
Weight 重量	48kg	102kg

两轴可调式T型 T Type

特点 Characteristic:

1. T型两轴可调式多轴器可做小距离的钻孔，攻牙作业，轻巧灵活，操作方便。
 2. T型两轴可调式多轴器结构轻巧，适合在普通钻床上使用，使机器发挥双倍效率。
1. T-type two-axis adjustable multi-axis drill can drill holes in a small distance, tapping operation, lightweight and flexible, easy to operate.
 2. The structure of T-type two-axis adjustable multi-axis drill is lightweight and suitable for use on common drilling machines, which can double the efficiency of the machine.



产品参数 PRODUCT PARAMETERS

Model 型号	ST70	ST72	ST108	ST125	ST200
最大钻孔能力 Maximum drilling capacity	D4	ER8 C5	ER11/7 C6/6	ER16/10 C9/9	ER20/13 ER25/16
转速比 Speed ratio	1:1	1:1	1:1 1:2	1:1 1:2	1:1
最小距离（二轴间） Minimum distance (between two axes)	10	12.5	18	24	45
最大轴心范围 Maximum Axis Range	70	72	108	125	200
轴数 Axle number	2	2	2	2	2

可调固定式 Adjustable Fixed Type



万向节注意事项 Notices for Universal Joint:

1. 调整时不能超过规定的角度15度。
 2. 如超过此极限芯轴磨损或折断。
 3. 工作时应经常加润滑油脂。
1. The adjustment should not exceed the prescribed angle of 15 degrees.
 2. If the limit is exceeded, the mandrel is easy to wear or break.
 3. Lubricating grease should be added frequently when working.

说明 Explain:

配合机种主轴端尺寸(特殊规格定制)。

适用于钻床、自动攻牙机、双用钻攻一体机、空油压钻孔机、专用机的钻孔主轴头、攻牙主轴头。

Cooperate with spindle end size of machine type (customized for common specifications and special specifications).
Applicable to drilling machine, automatic tapping machine, dual-purpose drilling and tapping machine, air-oil pressure drilling machine, special machine drilling spindle head, tapping spindle head.

订购注意事项 Notes for ordering:

A.加工尺寸之中心距离，孔径，材质。

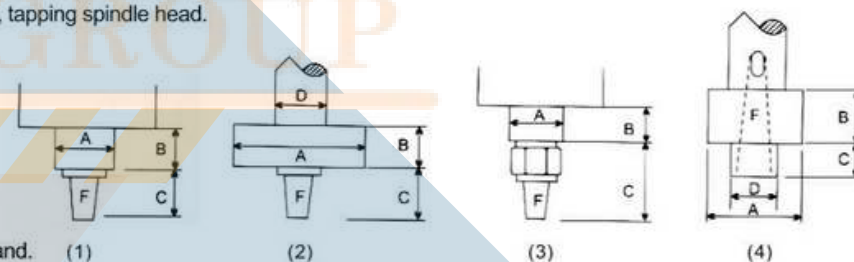
B.加工内容：钻孔、攻牙、铰牙。

C.配合机床之型式和厂牌之号码。

A. Central distance of processing dimension, aperture and material.

B. Processing contents: drilling, tapping and reaming.

C. The type of machine tool and the number of the manufacturer's brand.



U型圆形可调多轴器 U-Type Circle

配套钻孔攻丝机、动力主轴头使用最多可同时加工五十余孔位，安装快捷，增减方便。

Use of matching drill tapping machine and power spindle head, more than 50 holes can be processed at the same time. Installation is fast, increase or decrease is convenient.



产品参数 PRODUCT PARAMETERS

Model 型号	MU110		MU165		MU200		MU250		MU300	
最大钻孔能力 Maximum drilling capacity	ER8/5 ER11/7 ER16/10 ER20/13	C5/5 C6/6 C9/9	ER8/5 ER11/7 ER16/10 ER20/13	C5/5 C6/6 C9/9	ER8/5 ER11/7 ER16/10 ER20/13	C5/5 C6/6 C9/9	ER8/5 ER11/7 ER16/10 ER20/13	C5/5 C6/6 C9/9	ER8/5 ER11/7 ER16/10 ER20/13	C5/5 C6/6 C9/9
转速比 Speed ratio	1:1		1:1		1:1		1:1		1:1	
最小距离（二轴间） Minimum distance (between two axes)	13 18 26 28		13 18 26 28		13 18 26 28		13 18 26 28		13 18 26 28	
最大轴心范围 Maximum Axis Range	110		165		200		250		300	
轴数 Axis number	2-6		2-10		4-12		4-16		4-16	

特点 Characteristic:

1. 本体结构利用齿轮箱配合万向节所组成，容易调整加工孔距不受齿轮所限制，节省调整时间，也少有死角的限制，适合加工接近圆周分布孔的工作，是可调整式中最容易操作使用的规格。为保万向节的寿命，移动范围不得超过15度，等于垂直之前后左右30mm以内。
2. 根据同一工件牙距不同，可定制不同转速比多轴器，确保同时攻不同牙距产品。
3. 依据产品图纸，配合工作之孔距坐标，设计齿轮箱结构即定镗孔位。
4. 主体颜色可选，默认为银灰色。

1. The body structure is composed of gearbox and universal joint head. It is easy to adjust the processing hole distance without restriction of gear, saves adjusting time, and has few dead angle. It is suitable for the work of processing near circular distributed holes. It is the easiest specification to operate in the adjustable mode. In order to ensure the life of universal joint, the moving range should not exceed 15 degrees, which is equal to about 30 mm before and after perpendicularity.
2. According to the different pitch of the same workpiece, multi-axe machine with different speed ratio can be customized to ensure that different pitch products are attacked at the same time.
3. According to the product drawings and the coordinates of hole spacing, the structure of gearbox is designed to determine the boring position.
4. Subject color is optional, default is silver gray.

DK500A / DK650A

标准附件

数控系统---台湾新代
全封闭式防护罩
切削液循环装置
自动润滑装置
照明灯
水平调整螺栓与基础垫块
三轴滑轨伸缩护罩
电气箱热交换器
自动换刀系统(ATC)
操作说明书
工具箱

Standard Accessories

CNC control system--- Syntec
Full machine encloser
Coolant system
Auto lubrication system
Working Lamp
Leveling screw and block
Telescopic cover for slide rail
Heat exchanger system for control cabinet
Automatic tool changed
Operation manual
Tool box

特殊附件

第四轴旋转工作台
冲水水枪装置
手提式吹屑空气枪

Special Accessories

4th axis rotary table
Squirt gun
Portable air gun for chip blow-out



主要特点:

1. 主轴最高转速可达30000r/min,变速范围广,适用于锌铝铜等有色金属及树脂复合材料等加工。
2. 窗口式参数化数控系统,系统内集成了常用孔加工工艺模块,数控系统具有操作简单方便,编程方便,同时也可采用G代码编程,满足不同客户要求。
3. 数控十字工作台,定位精度高,移动速度快,适用于孔距要求高,孔数较多的零件加工。例如,灯罩行业的压铸产品的加工。

Main Characteristics:

1. The maximum speed of the spindle can reach 30000r/min, and the shift range is wide. It is suitable for processing non-ferrous metals and resin composite materials such as zinc aluminum copper.
2. Window type parameterized numerical control system, the system integrates common hole processing technology modules. The numerical control system has simple and convenient operation and convenient programming. At the same time, it can also be programmed with G code to meet different customer requirements.
3. CNC cross table, high positioning accuracy, fast moving speed, suitable for parts with high hole spacing requirements and more holes. For example, the processing of die-casting products in the led industry.

PRODUCT PARAMETERS

产品参数

Model 型号	DK500A	DK650A
Working Table Size 工作台尺寸	550*350mm	700*350mm
T Slot T型槽	M12-3pcs-120mm	M12-3pcs-120mm
Table Max Load 工作台承重	200kg	200kg
X/Y/Z-axis Travel X/Y/Z轴行程	500mm/350mm/360mm	650mm/350mm/360mm
Distance From Spindle To Table 主轴到工作台距离	420mm	420mm
Distance From Spindle Center To Column 主轴到立柱的距离	380mm	380mm
Spindle Speed 主轴转速	8000r/min	8000r/min
Spindle Taper 主轴锥度	BT30	BT30
Rapid Traverse(X/Y/Z-axis) X/Y/Z 快速进给速度	25000mm/min	25000mm/min
Cutting Speed(X/Y/Z-axis) X/Y/Z 切削进给速度	10000mm/min	10000mm/min
Tool Number 刀库容量	12pcs	12pcs
Tool Changed Time 换刀时间	1.5S	1.5S
Positioning Accuracy 定位精度	±0.01mm	±0.01mm
Repeat Positioning Accuracy 重复定位精度	±0.005mm	±0.005mm
System 系统	GUNT/SYNTEC	GUNT/SYNTEC
Motor 电机	3.7kw	3.7kw
Machine Size 机器尺寸	1500*1750*2400mm	1760*1830*2400mm
Machine Weight 机器重量	2.3T	2.8T

详细信息 / Product detail



精密多轴器

U型中切削方型多轴器 U-Type Square



特点 Characteristic:

1. 方型可调式多轴器结构与圆型相同，工作孔距如属直线或长方形万向多轴器，以免移位量太大损害万向节接头寿命。使用方法与圆形相同。
2. 依据产品图纸，配合工作的孔距坐标，设计齿轮箱结构即定镗孔位。
1. The structure of square adjustable multi-axe joint is the same as that of circular one. If the working hole spacing is linear or rectangular, the joint life will not be damaged by too much displacement. The method of use is the same as that of circle.
2. According to the product drawings and the hole distance coordinates of the work, the structure of the gearbox is designed to determine the boring position.

(重切屑)U型系列多轴器 U-Type Heavy Duty

特点 Characteristic:

1. 本体结构利用齿轮箱配合万向节头所组成。容易调整加工孔距不受齿轮所限制，节省调整时间，也少有死角的限制。适合加工接近圆周分布孔的工件。其齿轮、轴承、输出轴、万向节均采用强力系列。适合加工工件等强力场合。为保万向节头的寿命，移动范围不得超过15度。等于垂直之前后左右30mm以内。
2. 依据产品图纸，配合工作的孔距坐标，设计齿轮箱结构即定镗孔位。
1. The body structure is composed of gearbox and universal joint head. It is easy to adjust the processing hole distance without restriction of gears, saves adjustment time, and has few dead angle restrictions. It is suitable for processing workpieces close to circular distribution holes. Its gears, bearings, output shafts and universal joints all adopt strong series, which is suitable for processing steel parts and other strong occasions. In order to ensure the life of universal joint, the moving range should not exceed 15 degrees, which is equal to about 30 mm before and after perpendicularity.
2. According to the product drawings and the hole distance coordinates of the work, the structure of the gearbox is designed, that is, the fixed boring position.



产品参数 PRODUCT PARAMETERS

Model 型号	MU100×165	MU120×200	MU120×300	MU160×450	MU220×360	MU250×500	MU300×500	
最大钻孔能力 Maximum drilling capacity	ER8/5 ER11/7 ER16/10 ER20/13 C5/5 C6/6	ER8/5 ER11/7 ER16/10 ER20/13 C5/5 C6/6 C9/9	ER8/5 ER11/7 ER16/10 ER20/13 C5/5 C6/6 C9/9	ER8/5 ER11/7 ER16/10 ER20/13 C5/5 C6/6 C9/9	ER8/5 ER11/7 ER16/10 ER20/13 C5/5 C6/6 C9/9	ER8/5 ER11/7 ER16/10 ER20/13 C5/5 C6/6 C9/9	ER8/5 ER11/7 ER16/10 ER20/13 C5/5 C6/6 C9/9	ER8/5 ER11/7 ER16/10 ER20/13 C5/5 C6/6 C9/9
转速比 Speed rate	1:1	1:1	1:1	1:1	1:1	1:1	1:1	
最小距离 (二轴间) Minimum distance (between two axes)	13 18 26 28	13 18 26 28	13 18 26 28	13 18 26 28	13 18 26 28	13 18 26 28	13 18 26 28	
最大轴心范围 Maximum Axis Range	100×165	120×120	120×300	160×450	220×360	250×500	300×500	
轴数 Axle number	2-8	2-12	4-16	4-14	4-14	4-18	4-18	

精密多轴器

固定式多轴器 Fixed Type

定制型 Customized

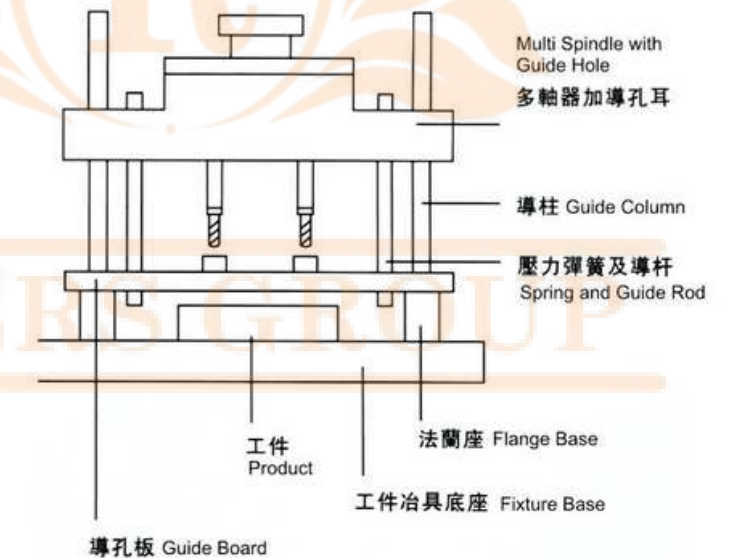
外型与轴数不拘 Shape and number of axes are irrelevant



固定式加导孔板 Fixed Guide Plate

固定型加导孔板多轴器准确耐用，在更换工件时，有很多空间取付方便，不会受到治具之妨碍。所加工出来的产品更精确，多轴器更耐用。

Fixed multi-axis machine with guide plate is accurate and durable. When replacing the workpiece, there are a lot of space for easy payment, and it will not be hindered by fixtures. The processed products are more precise and the multi-axis machine is more durable.





ZX7016



ZX7045/7045A

标准附件

1. 钻夹头
2. 铣刀(ZX7016无)
3. 锥柄接杆
4. 锥柄接套(ZX7016无)
5. 下刀铁
6. 拉杆
7. 扳手

Standard Accessories

1. Drill chuck
2. Cutter(ZX7016 without)
3. Arbor
4. Taper sleeve(ZX7016 without)
5. Drift
6. Drawbar
7. Wrench

特殊附件

1. 铣夹头
2. 角度平口钳
3. 防护罩
4. 机架

Special Accessories

1. Milling chuck
2. Angle vice
3. Safety guard
4. Cabinet

PRODUCT PARAMETERS

产品参数

Model 型号	ZX7016	ZX7045/ 7045A
最大钻孔直径 Max. Drilling capacity(mm)	16	铸铁(Cast Iron)45/ 钢(Steel)32
最大端铣宽度 Max width of face milling(mm)	40	80
最大立铣直径 Diameter of vertical milling(mm)	10	28
主轴最大行程 Spindle travel (mm)	80	110
主轴中心至立柱母线距离 Distance spindle axis to column generating line(mm)	182	260
主轴端至工作台面最大距离 Max. Distance spindle nose to table(mm)	380	475
主轴锥度 Spindle taper	MT2	MT4
主轴转速范围 Spindle speeds range(r/min)	320-3300	66-1380/95-1940
主轴转速级数 Spindle speeds series(级)	12	6/12
主轴进给范围 Range of spindle speeds(mm)	伺服控制	/
工作台面尺寸 Dimension of worktable surface(mm)	420×152	730×210/820×240
工作台行程 Table travel(mm)	230×150	500×175/550×220
底座尺寸 Dimension of base(mm)	/	605×558
总高 Overall height(mm)	900	1100
电动机 Motor(W)	550	1100/1500
冷却泵电机 Coolant motor(W)	/	40
毛重/净重 G.W/N.W(kg)	91/71	440/395
包装尺寸 Packing dimension(mm)	880×620×265(carton) 650×580×770(wood case)	860×740×1160(carton) 970×770×1160(wood case)

标准附件

数控系统---台湾新代
全封闭式防护罩
切削液循环装置
自动润滑装置
照明灯
水平调整螺栓与基础垫块
三轴滑轨伸缩护罩
电气箱热交换器
自动换刀系统(ATC)
操作说明书
工具箱

Standard Accessories

CNC control system--- Syntec
Full machine encloser
Coolant system
Auto lubrication system
Working Lamp
Leveling screw and block
Telescopic cover for slide rail
Heat exchanger system for control cabinet
Automatic tool changed
Operation manual
Tool box

特殊附件

第四轴旋转工作台
冲水水枪装置
手提式吹屑空气枪

Special Accessories

4th axis rotary table
Squirt gun
Portable air gun for chip blow-out

**主要特点:**

1. 主轴最高转速可达30000r/min,变速范围广,适用于锌铝铜等有色金属及树脂复合材料等加工。
2. 窗口式参数化数控系统,系统内集合了常用孔加工工艺模块,数控系统具有操作简单方便,编程方便,同时也可采用G代码编程,满足不同客户要求。
3. 数控十字工作台,定位精度高,移动速度快,适用于孔距要求高,孔数较多的零件加工。例如,灯罩行业的压铸产品的加工。

Main Characteristics:

1. The maximum speed of the spindle can reach 30000r/min, and the shift range is wide. It is suitable for processing non-ferrous metals and resin composite materials such as zinc aluminum copper.
2. Window type parameterized numerical control system, the system integrates common hole processing technology modules. The numerical control system has simple and convenient operation and convenient programming. At the same time, it can also be programmed with G code to meet different customer requirements.
3. CNC cross table, high positioning accuracy, fast moving speed, suitable for parts with high hole spacing requirements and more holes. For example, the processing of die-casting products in the led industry.

PRODUCT PARAMETERS

产品参数

Model 型号	DK650B	DK700
Working Table Size 工作台尺寸	700*350mm	750*420mm
T Slot T型槽	M12-3pcs-120mm	M14-3pcs-1162.5mm
Table Max Load 工作台承重	200kg	300kg
X/Y/Z-axis Travel X/Y/Z轴行程	500mm/320mm/360mm	700mm/400mm/400mm
Distance From Spindle To Table 主轴到工作台距离	420mm	620mm
Distance From Spindle Center To Column 主轴到立柱的距离	380mm	545mm
Spindle Speed 主轴转速	8000r/min	8000r/min
Spindle Taper 主轴锥度	BT30	BT40
Rapid Traverse(X/Y/Z-axis) X/Y/Z 快速进给速度	30000mm/min	35000mm/min
Cutting Speed(X/Y/Z-axis) X/Y/Z 切削进给速度	10000mm/min	10000mm/min
Tool Number 刀库容量	16pcs	12pcs
Tool Changed Time 换刀时间	1.5S	1.5S
Positioning Accuracy 定位精度	±0.01mm	±0.01mm
Repeat Positioning Accuracy 重复定位精度	±0.005mm	±0.005mm
System 系统	GUNT/SYNTEC	GUNT/SYNTEC
Motor 电机	3.7kw	5.5kw
Machine Size 机器尺寸	1500*1750*2400mm	2000*2000*2500mm
Machine Weight 机器重量	2.9T	3.5T

RIDERS GROUP

全自动钻孔机

Save time and effort
省时省力

主要特点:

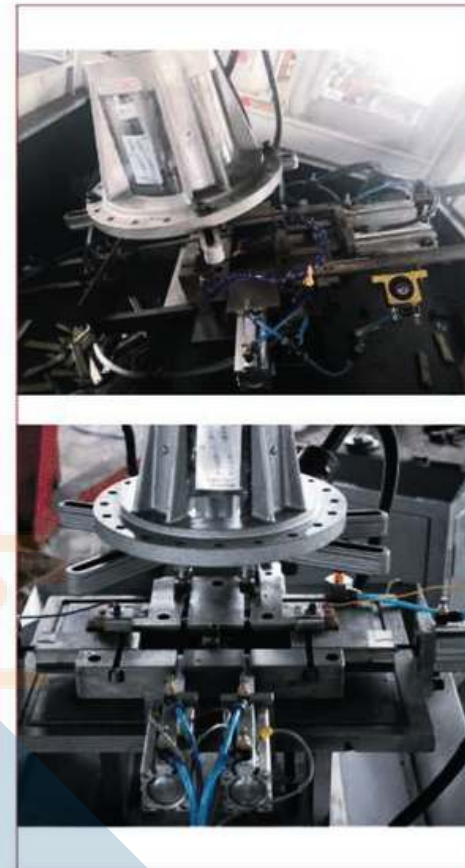
1. 适用于高度精密、高速钻孔之铜、铁、不锈钢等材质。
(转速最高达8000转/分钟)
2. 适用于同规格产品之大量生产场合应用, 提高效率, 降低人工。
3. 可依据客户要求订制各种规格自动钻孔机。
4. 机头根据需要可使用钻床改装, 精密动力钻头(气压/油压), 精密搪铣头, 主轴头配液压滑台等实现自动进给加工。
5. 配套有自动吹气系统和冷却系统, 自动清除残屑、渣和保障钻头寿命。另根据需要可加装钻头折损感应装置检测。

Main Characteristics:

1. Suitable for drilling of copper, iron, stainless steel, die-casting etc.
2. Applicable to production different specification products, improve efficiency and save labor.
3. OEM acceptable.
4. Machine can use precision power drilling (pneumatic/hydraulic), boring and milling units, spindle with hydraulic sliding table, etc. To realize the automatic feeding processing.
5. Have cooling system to protect drill bit. Equipped with automatic blowing system to remove burrs, and can be installed with drill bit damage sensing device as required.



Fast feed 快进刀 高效率



全自动攻丝机

全自动 高效率
易操作 更安全

Fully automatic
High efficiency
Easy to operate
More secure

主要特点:

1. 本机是规格化生产的标准机型, 只要工件可以经由送料机械, 整列定向送入轨道皆可在本机做全自动钻孔攻牙作业。
2. 钻孔和攻牙均可独立适用。
3. 全自动攻牙、牙距和牙深准确, 产品一致性高。
4. 适用于同规格产品在大量生产场合应用, 提高效率, 降低人工, 可以一人操作多台机器。
5. 通孔、盲孔均可加工。有进刀、扭力、径向及夹持的安全装置, 确保攻牙寿命及安全。
6. 规格更换容易, 可增加冷却系统确保牙纹质量。
7. 另根据需要可加装钻头或丝攻折损感应装置检测。

Main Characteristics:

1. This machine is a standard machine for standardized production. As long as the workpiece can be directionally put into the track through the feeding machine, the machine can do full-automatic drilling and tapping operation.
2. Drilling and tapping can be applied independently.
3. Fully automatic tapping, spacing and depth of teeth are accurate, and the product consistency is high.
4. Applicable to the same specifications of products in mass production occasions, improve efficiency, reduce labor, one person can operate more than one machine.
5. Through hole and blind hole can be machined. There are safety devices for feeding, torsion, radial and clamping to ensure the service life and safety of tapping teeth.
6. It is easy to change specifications and increase cooling system to ensure the quality of dental grain.
7. Drill bit or tapping breakage induction device can be installed to detect if necessary.



四头自动攻牙机
Four spindles
automatic tapping machine



双头全自动攻牙机(分割转盘式)
Two spindles automatic
tapping machine(Rotary type)



双轨道
Two railway

螺母攻牙机

主要特点:

1. 自动送料、攻牙、落料一体完成。
2. 利用棘轮机械装置准确定位，确保精度。
3. 立式、斜式、卧式多种选择省却排屑困扰。
4. 丝锥损坏、料满停机红外线检测。
5. 规格多样，接受定制。

Main Characteristics:

1. Automatic loading, tapping and unloading are completed.
2. Accurate positioning with a ratchet mechanism.
3. Vertical, slant and horizontal multi-options prevent chip removal.
4. Tapping broken, fulling infrared detection.
5. Various size, accept custom-make.



单头螺母攻牙机(A)
Single nut tapping machine



INTELLIGENT AND
HIGH EFFICIENCY

螺母攻牙机

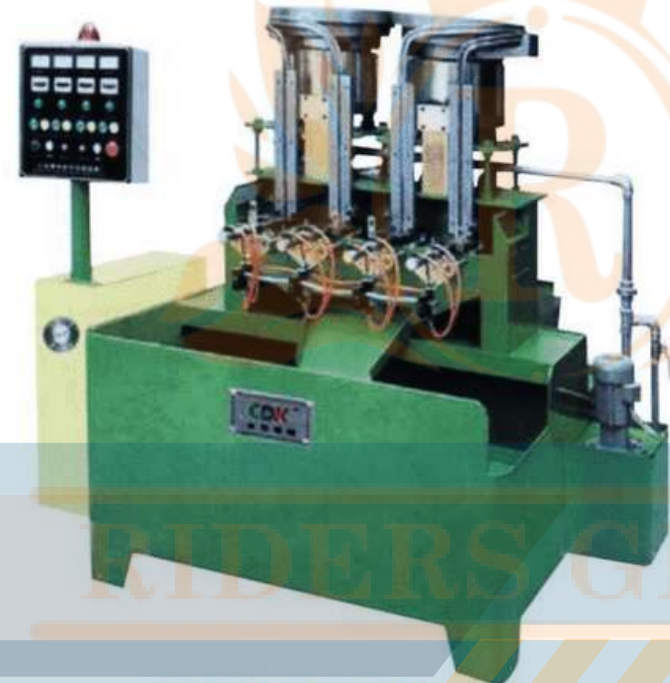


单头螺母攻牙机(B)
Single nut tapping machine



单头螺母攻牙机(C)
Single nut tapping machine

Save time and effort 省时省力



气动式多头螺母攻牙机
Pneumatic multi-head nut tapping machine



斜式双头螺母攻牙机
Slant double nut tapping machine

滑台式钻攻专机

Save time and effort
—— 省时省力

主要特点:

- 1. 自动送料、钻孔、攻牙、下料一体完成。
- 2. 产品精度高，一致性好。
- 3. 可配多轴器，提高效率。
- 4. 适操作简单，安全可靠，可选配安全罩，光幕，振动盘。

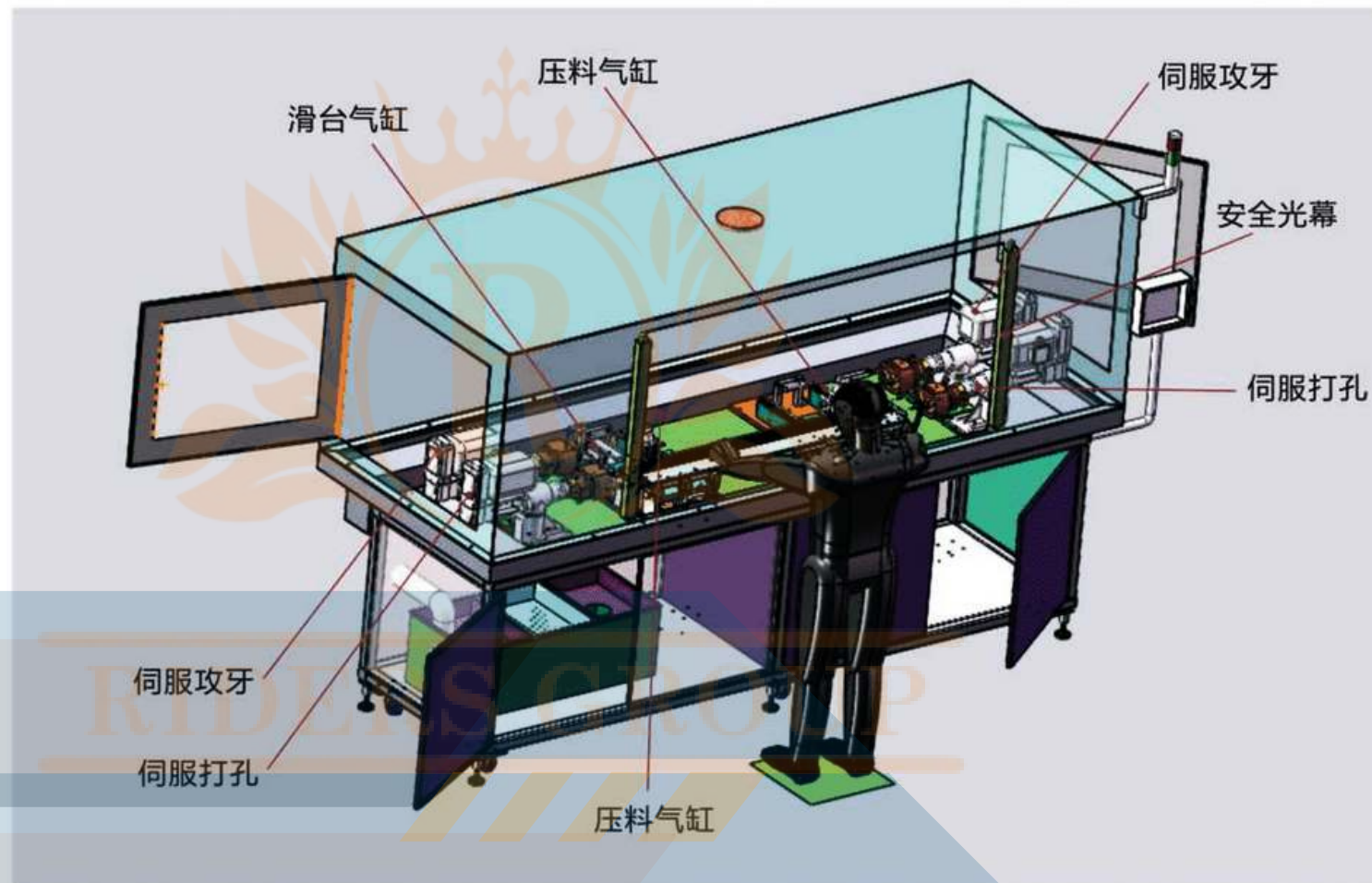
Main Characteristics:

- 1. Automatic loading, drilling, tapping and unloading are completed.
- 2. High precision and consistency.
- 3. Multi-spindle head can be equipped to improve efficiency.
- 4. Simple operation, safe and reliable, optional safety cover, light curtain, vibration plate.

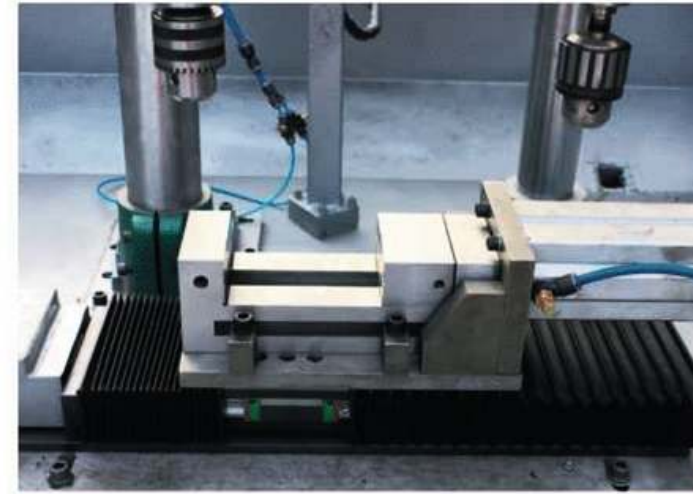


多方位多头伺服钻攻专机
Servo multi-directional drilling tapping machine

INTELLIGENT 智能化



滑台式钻攻专机



Save time and effort
—— 省时省力



多轴气动滑台钻孔攻牙机
Multi-axis pneumatic drilling tapping machine

(铸件) 钻孔

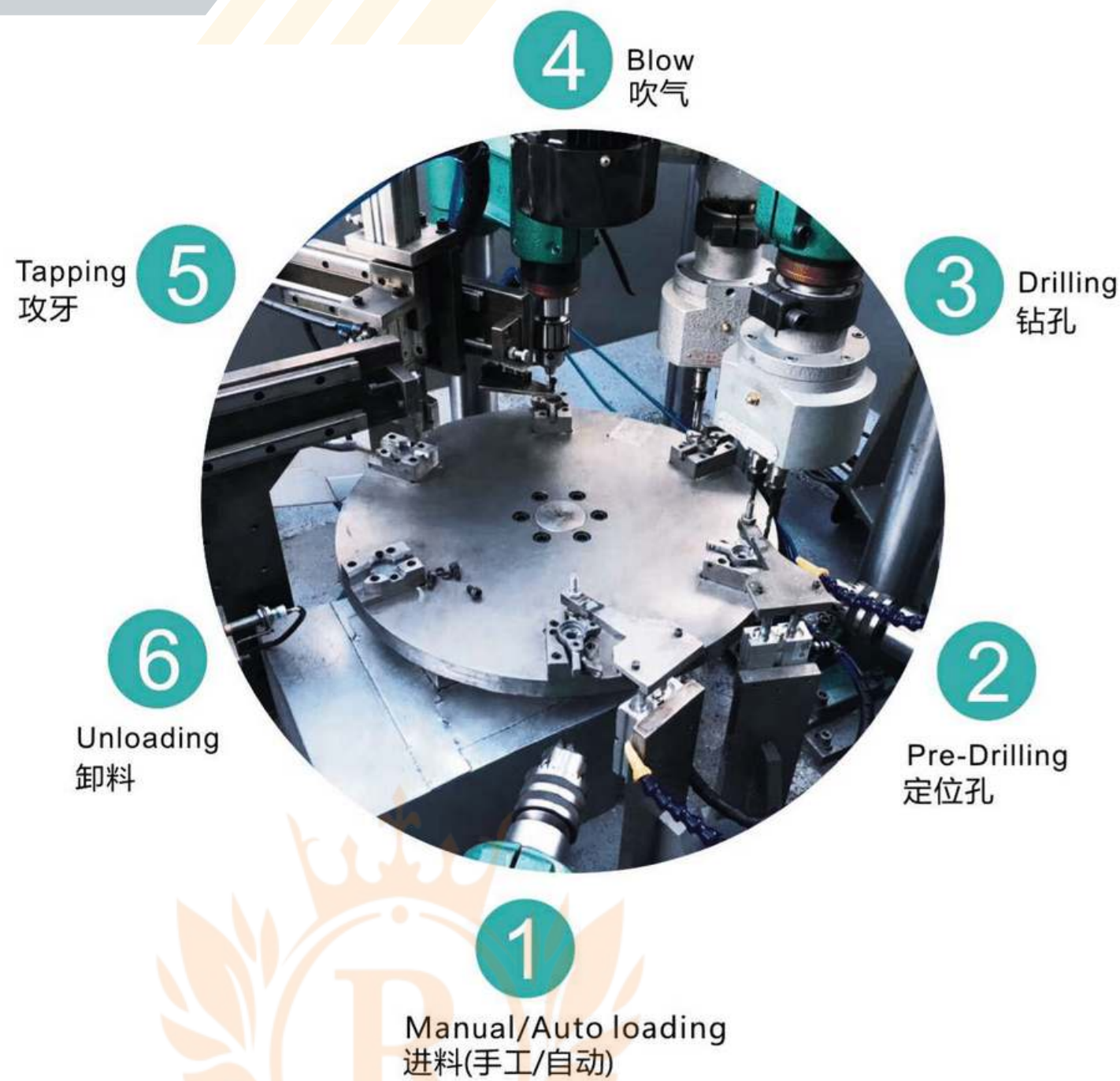


多轴数控滑台钻孔攻牙机
CNC multi-axis drilling tapping machine



灯罩气动滑台钻孔攻牙机
LED (die casting) drilling tapping machine

多工位转盘机



主要特点:

1. 可以一次性完成钻孔，倒角，攻牙等多道工序，提高生产效率。
2. 多道工序一次性完成，减少产品装夹次数，降低产品划伤概率，增加产品一致性，使产品更加完美。
3. 降低用电损耗量，节能环保。
4. 一键式按钮，对操作工要求门槛低，普工也可胜任。

Main Characteristics:

1. It can complete drilling, chamfering, tapping and other processes in one time to improve production efficiency.
2. Multiple processes are completed in one time, reducing clamping times, reducing the probability of product scratching, increasing product consistency, and making the product more perfect.
3. Reduce electricity consumption, energy saving and environmental protection.
4. One-button start and the general worker can also be competent.

多工位转盘机



INTELLIGENT AND
HIGH EFFICIENCY
智能化 效率高



HIGH EFFICIENCY

主要特点:

- 1. 一钻一攻 连体机, 适用于LED 灯罩行业或者多孔产品。
- 2. 可配多轴器完成一次性 多孔钻孔和攻丝操作。
- 3. 一人可操作两台机器, 节省人工, 提高效率。

Main Characteristics:

- 1. One drilling and one tapping, one-piece machine, suitable for LED lighting industry or multi holes products.
- 2. Can be equipped with multi-spindles head to complete one-time multi holes drilling and tapping operation.
- 3. One person can operate two machines, saving labor and improving efficiency.



数控双钻联体机
CNC double drilling machine



智能化 效率高
Save time and effort
省时省力

多方向钻孔机
Multi-directional drilling tapping machine



多轴双攻联体机
Multi-axis double tapping machine



多轴数控钻攻联体机
CNC multi-axis drilling tapping machine



多轴油压钻攻联体机
Multi-axis hydraulic drilling tapping machine



多方向钻攻专机
Multi-directional drilling tapping machine



标准件螺丝前进前出自动车床

加工形式: 加工小头部件
 工件长度: 30-70mm
 工件直径: $\phi 4$ -中15大小头偏差10mm
 工件形状: 圆形、四方、六方
 加工速度: 10-17支/分
 长度公差: $\leq \pm 0.05\text{mm}$
 控制系统: PLC+液压系统
 电机功率: 1.5KW
 主轴转速: 2000转/分(可选配无级调速)



全自动锯料机

机床型号: 60型、120型
 工件长度: 5-195mm(可定制加长)
 工件直径: 2-32mm(可加大)
 工件形状: 圆形、四方、六方、异形状
 长度公差: $\leq \pm 0.03\text{mm}$
 平行度: $\leq \pm 0.015\text{mm}$
 控制系统: PLC
 电机功率: 1.5/2.2KW
 动力系统: 气动、伺服
 主轴转速: 200-3000转/分(无级变速)
 电源电压: 380V 50Hz(三相四线)
 整机重量: 约500kg
 进料形式: 后送料
 适用范围:
 适合批量生产各种小轴类、管类异形零件的切割。
 切割效果无毛边, 垂直度、总长度有保障。



重型打孔车床(液压型)

项目 Item	参数 Parameters
床身最大回转直 Max. diameter of the production(mm)	320
最大加工长度 Max. length of the production(mm)	145
最大回转直径 Max. diameter of the carrier(mm)	$\Phi 200$
拖板上最大回转直径 Max. rotay diameter of the carrier(mm)	$\Phi 75$
主轴通孔直径 Bore of the main spindle(mm)	$\Phi 40$
主轴内锥度 Inside taper of main spindle	43
主轴转速范围 Rolling speed of the main spindle Range(r/min)	200-2000
主电机功率 Power of the main motor(kw)	标配3KW8极
油泵电机功率 Oil pump motor power(kw)	标配1.5KW4极
最大打孔直径 Maximum punch diameter(Φ)	$\Phi 3$ - $\Phi 30$
最大打孔深度 Maximum punch depth(mm)	130
机床重量 Weight(kg)	800
机床外形尺寸 Overall size(mm)	1650*1000*1330



Save time and effort
 省时省力



全动车外圆倒角机

全自动切槽机



(伺服)钻孔动力头 (S)D74

最大钻孔能力 Max. drilling capacity(mm)

钢Steel Φ8 | 铝Aluminum / 铜Copper Φ12

功能特点 Function characteristic:

1. 精度高,主轴跳动0.01mm
 2. 转速高,最高转速达3000r/min
 3. 体积小,重量轻,适合安装
 4. 采用0.37kw或0.75kw电机,适合小孔加工
1. High precision, spindle jitter 0.01mm.
 2. High speed, the maximum speed of 7500r/min.
 3. Small size, light weight, suitable for installation.
 4. The use of 0.37kw or 0.75kw motor, suitable for small hole processing.

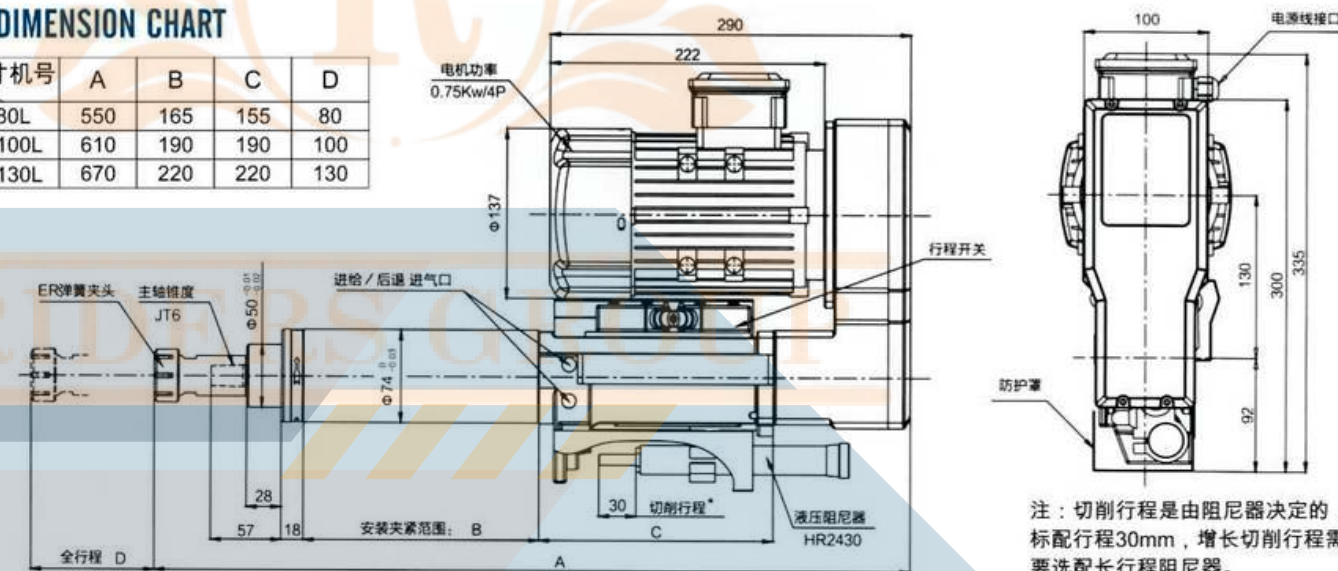


产品参数 PRODUCT PARAMETERS

型号	空载转速 50HZ RPM	钻夹头规格 mm	最大钻削直径												行程		马达		进给推力 N	耗气量 L/行程	重量 kg
			1轴			2轴			3轴			4轴			全行程 mm	切削进给行程 mm	功率 KW	极数 P			
			铝	铸铁	钢	铝	铸铁	钢	铝	铸铁	钢	铝	铸铁	钢							
SPS3-2-6075	7500	6	3	2	1	—	—	—	—	—	—	—	—	—	80	0-30	0.37	2	1250	3-5	20
SPS3-2-6055	5500	4	2.5	1.5	4	2.5	1.5	—	—	—	—	—	—								
SPS3-2-6040	4000	5.5	4	2	5	4	2	4	3.5	2	3.5	3	2								
SPS3-2-6030	3000	7	5	3	6	5	3	5	4	3	4	3.5	3								
SPS3-2-1330	3000	7	5	3	6	5	3	5	4	3	4	3.5	3								
SPS3-2-1328	2800	9	7.5	5	7	5.5	5	6	5	4	5.5	4	3.5								
SPS3-4-1325	2500	13	7	5.5	3.5	5.5	4.5	3.5	4.5	3.5	3	4	3	2.5							
SPS3-4-1318	1800	7.5	6	5	6	5	4	5	4	3.5	5	3.5	3								
SPS3-4-1313	1300	8	7	6	6.5	5.5	5	6	5	4	5.5	4.5	3.5								
SPS3-4-1306	600	11.5	9	8	8.5	7	6	7	5.5	4.5	5.5	4.5	3.5								

尺寸图 DIMENSION CHART

型号	尺寸机号	A	B	C	D
SPS3-74-80L		550	165	155	80
SPS3-74-100L		610	190	190	100
SPS3-74-130L		670	220	220	130



(伺服)钻孔动力头 (S)D92

最大钻孔能力 Max. drilling capacity(mm)

钢Steel Φ13 | 铝Aluminum / 铜Copper Φ16

功能特点 Function characteristic:

1. 精度高,主轴跳动0.01mm
 2. 结构紧凑,刚性好
 3. 采用圆形机体,安装快捷方便
 4. 采用0.75kw或1.1kw电机
1. With high precision, the main shaft is 0.01mm.
 2. Compact structure, good rigidity.
 3. Using circular body, easy to install.
 4. Use 0.75kw or 1.1kw motor.



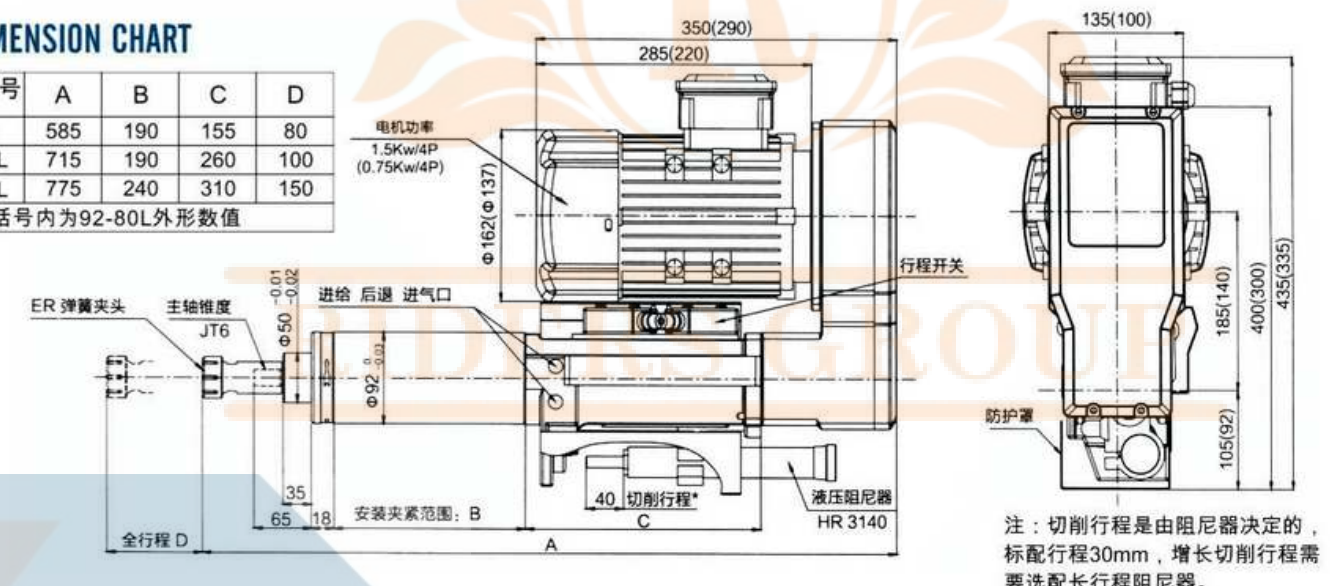
产品参数 PRODUCT PARAMETERS

型号	空载转速 50HZ RPM	钻夹头规格 mm	最大钻削直径												行程		马达		进给推力 N	耗气量 L/行程	重量 kg
			1轴			2轴			3轴			4轴			全行程 mm	切削进给行程 mm	功率 KW	极数 P			
			铝	铸铁	钢	铝	铸铁	钢	铝	铸铁	钢	铝	铸铁	钢							
SPS4-2-6060	6000	6	3	2	1	—	—	—	—	—	—	—	—	100	0-40	0.75	2	1800	3-5	32	
SPS4-2-6050	5000	4	2.5	1.5	4	2.5	1.5	—	—	—	—	—	—								
SPS4-2-6040	4000	5.5	4	2	5	4	2	4	3.5	2	3.5	3	2								
SPS4-2-6030	3000	7	5	3	6	5	3	5	4	3	4	3.5	3								
SPS4-2-1330	3000	7	5	3	6	5	3	5	4	3	4	3.5	3								
SPS4-2-1328	2800	9	7.5	5	7	5.5	5	6	5	4	5.5	4	3.5								
SPS4-4-1320	2000	16	10	8	6	5.5	4.5	3.5	4.5	3.5	3	4	3								2.5
SPS4-4-1314	1400	12	10	9	6	5	4	5	4	3.5	5	3.5	3								
SPS4-4-1310	1000	14	12	11	9	7	6	6	5	4	5.5	4.5	3.5								
SPS4-4-1307	700	16	14	13	10	8	7	8	7	6	6	5	4								

尺寸图 DIMENSION CHART

型号	尺寸机号	A	B	C	D
SPS4-92-80L		585	190	155	80
SPS4-92-100L		715	190	260	100
SPS4-92-130L		775	240	310	150

注: 括号内为92-80L外形数值



(伺服)攻牙动力头 (S)N74

最大攻牙能力 Max. tapping capacity(mm)

钢Steel M12 | 铝Aluminum / 铜Copper M14

功能特点 Function characteristic:

1. 加工螺纹精度高,达到6级(H)
 2. 噪音小,采用精密齿轮和丝杆传递
 3. 采用圆形机体,安装快捷方便
 4. 采用1.8kw伺服电机,可随意调整转速
1. The machining precision is high, reaching level 6(H).
 2. The noise is small, the use of precision gears and screw transmission.
 3. The use of circular body, easy to install.
 4. The use of 1.8kw servo motor, can adjust the speed.



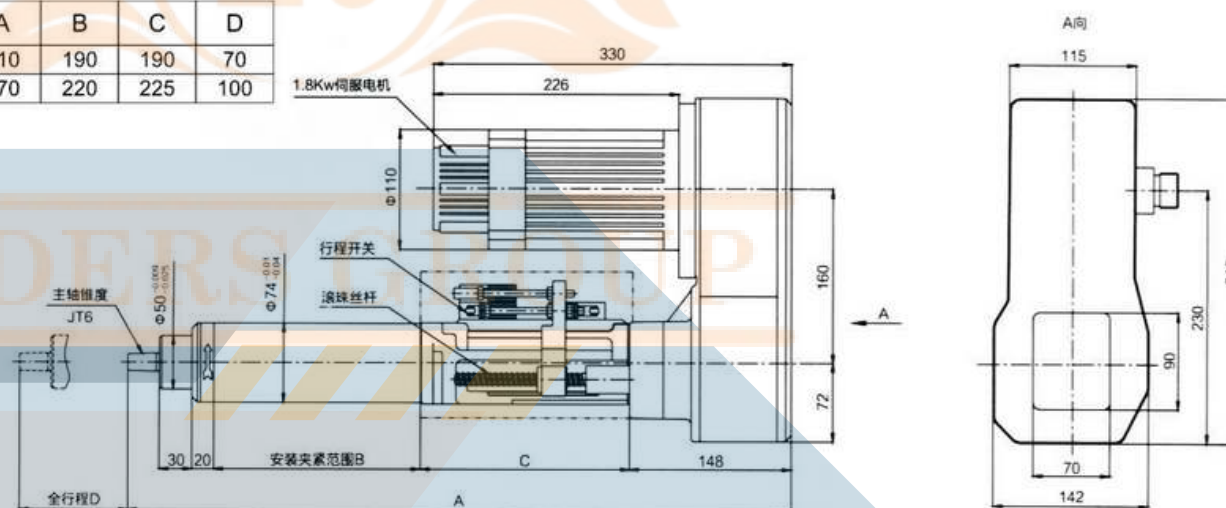
产品参数 PRODUCT PARAMETERS

型号	转速		单轴及多轴加工的最大攻丝能力								行程调节范围(mm)			可加工螺距		
	快进	切削	1轴		2轴		3轴		4轴		全行程	快进行程	切削行程	伺服电机规格	公制 mm	英制 牙数
	RPM		铝	钢	铝	钢	铝	钢	铝	钢						
SPSTR3-H108	Max. 3370	调速范围 0-1999	M10	M8	M8	M6	M6	M5	M6	M4	Max. 70	Max. 70	Max. 40	1.8Kw 200V 三相/单相 额定电流值 8.0A	0.3	40
			M8	M6	M6	M5	M5	M4	M5	M3					0.5	36
SPSTR3-L108	Max. 1600	调速范围 0-960	M12	M12	M10	M8	M8	M6	M8	M6					0.7	28
			M12	M10	M8	M8	M6	M5	M6	M5					0.8	26
															1.0	20
															1.25	18
															1.5	16
															1.75	14

- 注:
1. 攻丝能力表中的上格是使用螺旋丝锥和螺尖丝锥的加工能力,下格是使用2#手锥的加工能力。
 2. 同步攻丝机向上或斜向加工时,需要特别规格的防水保护罩。需结合规格制作,敬请联络。
 3. 切削转速应由工件材料,孔径尺寸、丝锥材质等因素决定。
 4. 不同的螺距加工要选配相应的螺距齿轮,在加工能力保证的前提下,可加工任意公、英制螺距的螺纹。
 5. 螺距加工的转速、快进速度可任意设定。
 6. 主轴附加装置在水平方向加工时的最大承载重量为15kg,垂直朝下方向为12kg。

尺寸图 DIMENSION CHART

型号	尺寸机号	A	B	C	D
SPSTR3-100L		610	190	190	70
SPSTR3-130L		670	220	225	100



(伺服)攻牙动力头 (S)N92

最大攻牙能力 Max. tapping capacity(mm)

钢Steel M16 | 铝Aluminum / 铜Copper M22

功能特点 Function characteristic:

1. 精度高,主轴跳动0.01mm
 2. 结构紧凑,刚性好
 3. 采用圆形机体,安装快捷方便
 4. 采用1.1kw或1.5kw电机
1. With high precision, the main shaft is 0.01mm.
 2. Compact structure, good rigidity.
 3. Using circular body, easy to install.
 4. Use 1.1kw or 1.5kw motor.



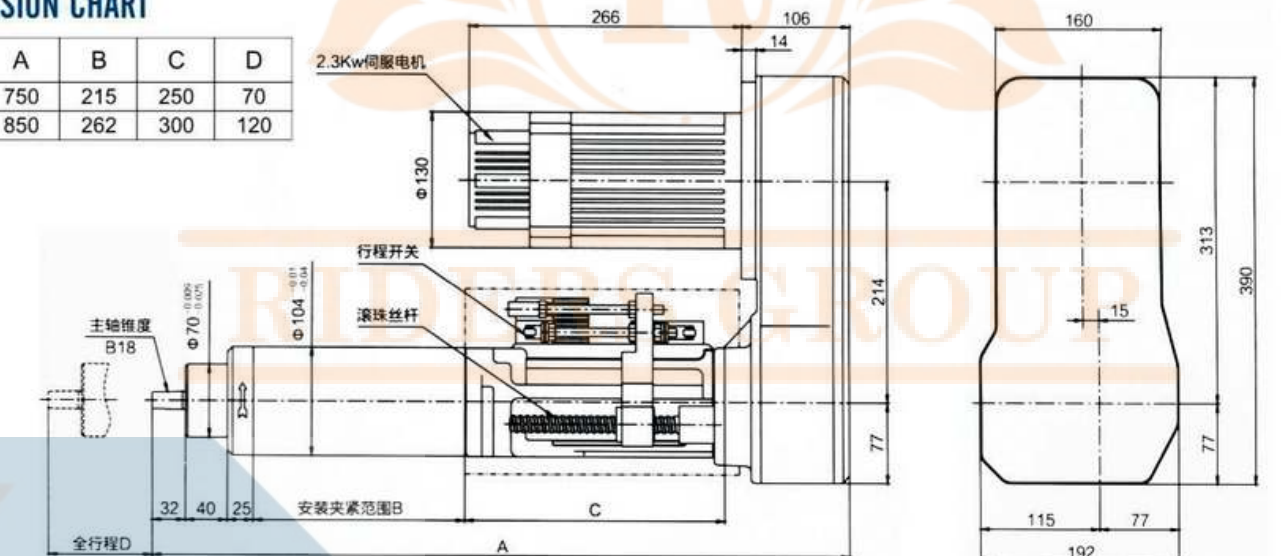
产品参数 PRODUCT PARAMETERS

型号	转速		单轴及多轴加工的最大攻丝能力								行程调节范围(mm)			可加工螺距		
	快进	切削	1轴		2轴		3轴		4轴		全行程	快进行程	切削行程	伺服电机规格	公制 mm	英制 牙数
	RPM		铝	钢	铝	钢	铝	钢	铝	钢						
SPSTR5-H316	Max. 2200	调速范围 0-1980	M14	M8	M10	M6	M8	M6	M8	M5	Max. 70	Max. 70	Max. 40	2.3Kw 200V 三相/单相 额定电流值 9.5A	0.5	40
			M12	M8	M8	M6	M8	M5	M6	M5					0.7	36
SPSTR5-L316	Max. 875	调速范围 0-780	M22	M16	M16	M10	M12	M8	M12	M6					1.0	24
			M18	M12	M12	M8	M10	M6	M10	M6					1.25	18
															1.5	16
															1.75	14
															2	12
															2.5	10

- 注:
1. 攻丝能力表中的上格是使用螺旋丝锥和螺尖丝锥的加工能力,下格是使用2#手锥的加工能力。
 2. 同步攻丝机向上或斜向加工时,需要特别规格的防水保护罩。需结合规格制作,敬请联络。
 3. 切削转速应由工件材料,孔径尺寸、丝锥材质等因素决定。
 4. 不同的螺距加工要选配相应的螺距齿轮,在加工能力保证的前提下,可加工任意公、英制螺距的螺纹。
 5. 螺距加工的转速、快进速度可任意设定。
 6. 主轴附加装置在水平方向加工时的最大承载重量为35kg,垂直朝下方向为25kg。

尺寸图 DIMENSION CHART

型号	尺寸机号	A	B	C	D
SPSTR5-100L		750	215	250	70
SPSTR5-130L		850	262	300	120



振动盘

振动盘应用 Application of Vibrating Plate



涂层振动盘 Coated Vibrating Plate



多轨道振动盘 Multi-track Vibration Plate



精密振动盘 Precision Vibrating Plate



五金类振动盘 Hardware Vibrating Plate

自动排序 大量生产

1. 全自动加工的不二之选
2. 效率高 故障率低 操作简单
3. 省工 省力 省时 省心
4. 根据要求可喷涂 避免破坏产品表面

Automatic sequencing mass production

1. Fully automatic processing is the best choice
2. High efficiency and easy operation
3. Save Labor and save time
4. Spray as required to avoid damage to product surface

振动盘顶盘 Vibrating Plate Top Plate



不锈钢等分螺旋线顶盘
Stainless steel split helix top plate

不锈钢锥形顶盘
Stainless steel conical top plate

不锈钢筒形顶盘
Stainless steel tubular top plate

铸铝合金等分顶盘
Cast aluminium alloy equal top plate

振动盘底座 Vibrating Plate Base

产品参数 PRODUCT PARAMETERS

额定电压为交流220/110V, 频率为50/60HZ,
振动盘根据需采用。
振动盘规格: 顶盘直径80~1000mm,
振动盘按物料走向可分为顺时针/逆时针走向。

The rated voltage is 220/110V AC and the frequency is 50/60HZ.
Vibrating disc is adopted according to need.
Vibrating disc specifications: Top plate diameter 80-1000mm.
Vibrating disc can be divided into clockwise and counterclockwise according to material direction.



振动盘

直振、控制器 Direct Vibration and Controller



多直线送料器 Linear Feeder

特点 Characteristic:

能平稳的输送一般微小、精密零件、排除浪费。简单紧凑的小型电磁式驱动部件, 用直接组装的全波驱动方式能有效实现小容量的一般微小零件的送料, 并且保养简单, 成本低。

It can smoothly convey small and precise parts and eliminate waste. Simple and compact small electromagnetic drive components, with direct assembly of full-wave drive mode, can effectively achieve small capacity of general small parts feeding, and simple maintenance, low cost.



数字控制器 Digital Controller



震动器 Vibrator



普通控制器 General Controller

数字稳压振动送料控制器 Digital Voltage Stabilized Vibration Feeding Controller

特点 Characteristic:

1. 稳压: 本调速器内置数字稳压功能, 在电源电压变化时可以迅速自动调整使输出电压保持不变, 从而保证振动盘在电压变化时保持相同的送料速度。
 2. 缓启动: 在通电启动时, 本调速器会从零开始缓慢增大输出电压, 以消除对振动盘的冲击。
 3. 线性调节规律: 本机具有线性调节电压规律。即随着调节旋钮角度的增大, 输出电压随调节旋钮角度的增大, 输出电压随调节旋钮角度以线性规律增大, 因此具有良好的可操作性。
 4. 短路保护功能: 本机设有短路保护功能, 短路发生时, 控制器会立即停止输出, 直到控制器重新启动为止。
 5. 过热保护功能: 本控制器工作温度过高时将停止输出, 以保护本机。
 6. 优化电器设计: 稳定可靠, 寿命长。
1. Voltage stabilization: This governor has built-in digital voltage stabilization function, which can automatically adjust the output voltage to keep constant when the power supply voltage changes, so as to ensure that the vibrating disc keeps the same feeding speed when the voltage changes.
 2. Slow start: When the power is turned on, the governor will increase the output voltage slowly from zero to eliminate the impact on the vibration disk.
 3. Linear regulation law: This machine has linear regulation voltage law. That is, with the increase of the angle of the adjusting knob, the output voltage increases linearly with the angle of the adjusting knob. Therefore, it has good operability.
 4. Short-circuit protection function: This machine has short-circuit protection function. When short-circuit occurs, the controller will stop output immediately until the controller restarts.
 5. Overheat protection function: When the temperature of the controller is too high, the output will stop to protect the machine.
 6. Optimize electrical design: stable and reliable, long life.

特殊设计 Special Design:

料满停机的功能, 减少消耗, 降低噪音污染源, 提高振动盘的寿命。
Full shutdown function, reduce consumption, reduce noise pollution sources, improve the life of vibration plate.

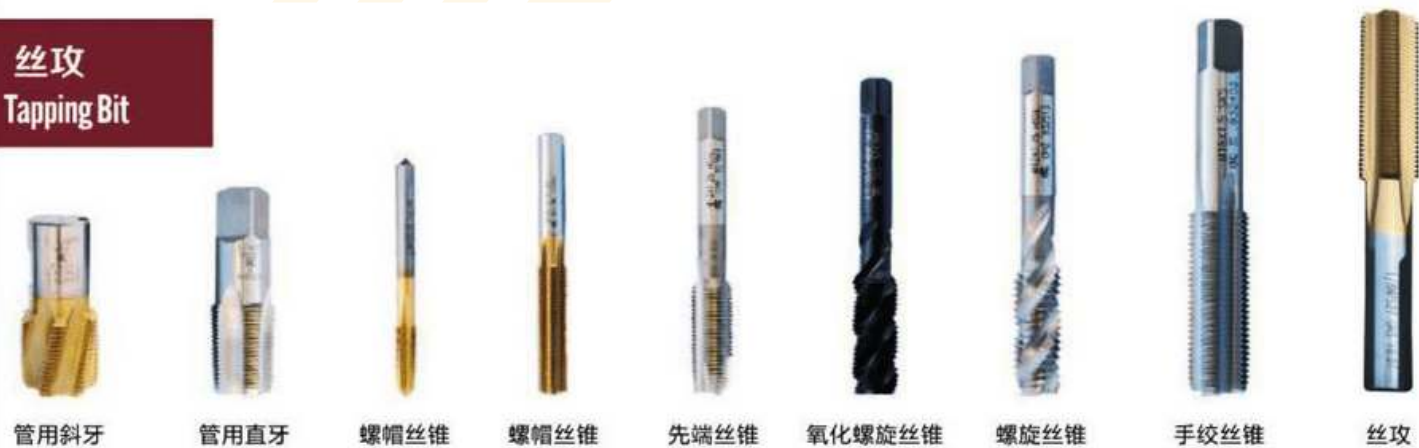
单机普通控制器 Single-machine General Controller

特点 Characteristic:

采用双向可控硅进行半波或全波调电压大小控制速度, 性能稳定, 安全可靠, 调节简单, 实现对振动盘的无极控制, 并带有缓冲电压开关, 不易损坏电磁铁。
The speed is controlled by half-wave or full-wave voltage regulation using bidirectional thyristor, which is stable, safe and reliable, and easy to adjust. It realizes the non-polar control of the vibration disk, and has a buffer voltage switch, so it is not easy to damage the electromagnet.

机械配件系列

丝攻 Tapping Bit



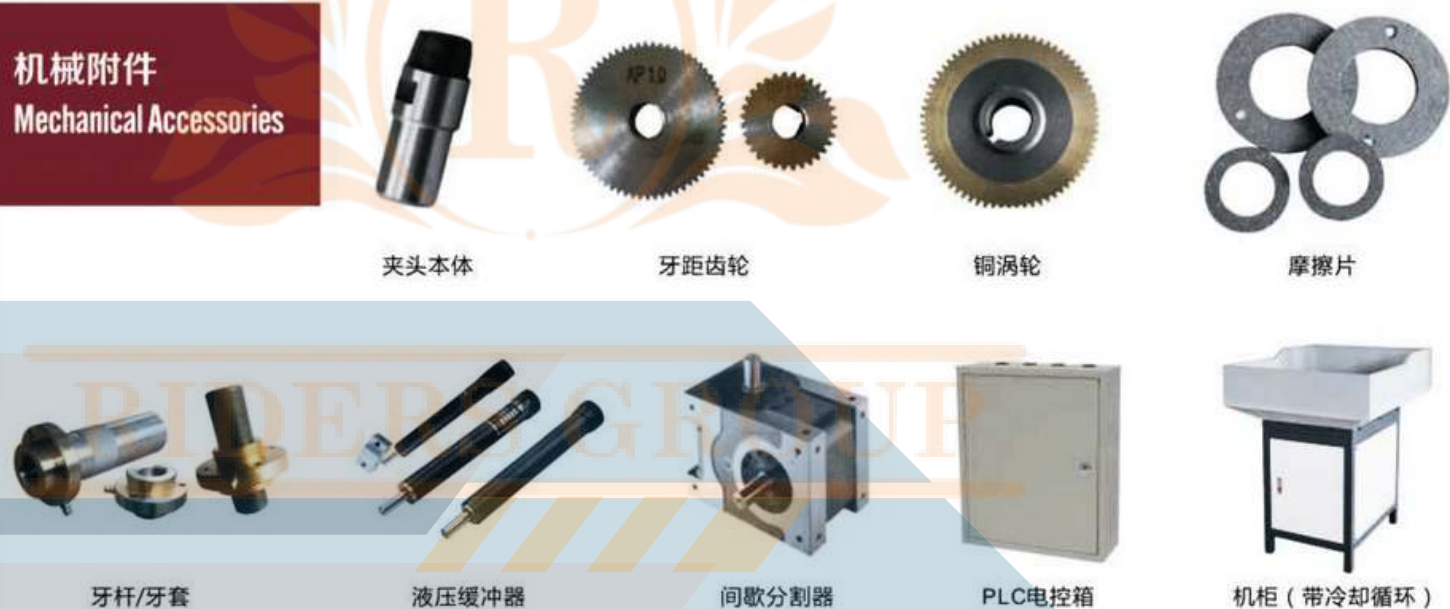
管用斜牙 管用直牙 螺帽丝锥 螺帽丝锥 先端丝锥 氧化螺旋丝锥 螺旋丝锥 手绞丝锥 丝攻

钻头 Drill Bit



麻花钻 阶梯钻 复合钻 台阶钻 合金钻头

机械附件 Mechanical Accessories



牙杆/牙套 液压缓冲器 间歇分割器 PLC电控箱 机柜(带冷却循环)

机械配件系列

多轴器配件 Multi-axle Fittings



万向节六角套 万向节六角棒 锥柄套 ER芯轴



CT芯轴 芯轴 轴承 普通/快拆万向节



M型扳手 螺母 齿轮轴 精密齿轮 精密齿轮



摆臂组件 攻牙摆臂 Tapping Spindle 钻孔摆臂 Drilling Spindle

精密夹头配件 Precision Chuck Fittings

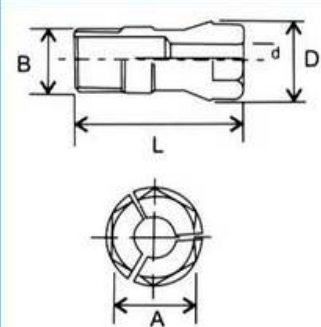


CT 夹头

C 夹头

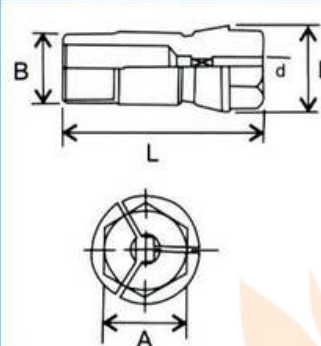
ER 夹头

C型钻孔夹头参数 C-type Drilling Chuck Parameters:



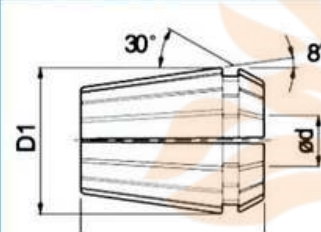
Model 型号	Ød柄径 (mm) Handle diameter	ØD (mm)	L (mm)	B	A (mm)	最大夹持能力 Max. clamping capacity
C-4	Ø1-Ø4	Ø8.2	24	1/4-28UNF	6	Ø4
C-5	Ø1-Ø5	Ø10.8	31.5	5/6-24UNF	8	Ø5
C-6	Ø1-Ø6	Ø13.1	36	3/8-24UNF	10	Ø6
C-9	Ø1-Ø9	Ø17	46	1/2-20UNF	14	Ø9
C-12	Ø2-Ø12	Ø21	50	5/8-18UNF	17	Ø12
C-14	Ø5-Ø14	Ø24.5	54	3/4-16UNF	21	Ø14
C-16	Ø5-Ø16	Ø31	70	M24-2.0	26	Ø16

CT型攻牙夹头参数 CT-type Tapping Chuck Parameters:



Model 型号	Ød柄径 (mm) Handle diameter	ØD (mm)	L (mm)	B	A (mm)	最大夹持能力 Max. clamping capacity
CT-4	Ø3-Ø4	Ø8.2	24	1/4-28UNF	6	M3.5×0.6
CT-5	Ø3-Ø5	Ø10.8	31.5	5/6-24UNF	8	M4×0.7
CT-6	Ø3-Ø6	Ø13.1	36	3/8-24UNF	10	M6×1.0
CT-9	Ø3-Ø7	Ø17	46	1/2-20UNF	14	M8×1.25
CT-12	Ø3-Ø9	Ø21	50	5/8-18UNF	17	M12×1.75
CT-14	Ø5-Ø12	Ø24.5	54	3/4-16UNF	21	M14×2.0
CT-16	Ø5-Ø14	Ø31	70	M24-2.0	26	M18×2.5

ER夹头参数 ER Chuck Parameters:



Model 型号	Clamping Range 型夹持范围														
ER8	1.0-1.5	1.5-2.0	2.0-2.5	2.5-3.0	3.0-3.5	3.5-4.0	4.0-4.5	4.5-5.0							
ER11	1.0-1.5	1.5-2.0	2.0-2.5	2.5-3.0	3.0-3.5	3.5-4.0	4.0-4.5	4.5-5.0	5.0-5.5	5.5-6.0	6.0-6.5	6.5-7.0			
ER16	2-3	3-4	4-5	5-6	6-7	7-8	8-9	9-10							
ER20	2-3	3-4	4-5	5-6	6-7	7-8	8-9	9-10	10-11	11-12	12-13				
ER25	2-3	3-4	4-5	5-6	6-7	7-8	8-9	9-10	10-11	11-12	12-13	13-14	14-15	15-16	



丝攻夹头A

铣床BT夹头

手动夹头座

气动夹头座

钻孔夹头

丝攻夹头B

